



Sandycroft, St Helier

St. Helier

£549,995

Three / four bedroom elevated bungalow which is a good two generation home or potential home with income and is situated on the St Helier / St Lawrence border, close to St Andrew's and Millbrook parks, on a great bus route and only a short stroll to the beach front. For the more energetic, a short cycle or brisk walk will take you to town to the east or to St Aubin to the west. This charming home is currently configured as two dwellings but offers the potential to convert into a four bedroom family home. The property briefly comprises an entrance porch, entrance hall, living room with feature bay window and an open fireplace which can be reinstated, a dining room with a feature functional open fireplace, a kitchen / breakfast room with separate utility room which form in the extension whic...

Telephone: 01534 730 341

Email: sales@gaudin.je

22 Hill Street St Helier, Jersey JE2 4UA, Channel Islands

 **GAUDIN CO**
The Property People since 1934

Gallery



Property Details

Location: Sandycroft, St Helier

Three / four bedroom elevated bungalow which is a good two generation home or potential home with income and is situated on the St Helier / St Lawrence border, close to St Andrew's and Millbrook parks, on a great bus route and only a short stroll to the beach front. For the more energetic, a short cycle or brisk walk will take you to town to the east or to St Aubin to the west. This charming home is currently configured as two dwellings but offers the potential to convert into a four bedroom family home. The property briefly comprises an entrance porch, entrance hall, living room with feature bay window and an open fireplace which can be reinstated, a dining room with a feature functional open fireplace, a kitchen / breakfast room with separate utility room which form in the extension which was added in 1975, a double bedroom and a single bedroom. To the rear and adjoining the property is a self contained one bedroom unit with its own separate entrance, a hallway, kitchenette, living room and bedroom which each offer ease to incorporate into the main part of the property as two bedrooms, making this a four bedroom home. Although no parking, there is a 12 hour disc parking zone on Rue de Tracy (there is access to the property from Rue de Trachy) as well as disc parking on the inner road (gentle steps up from the inner road). With a bus stop a stone's throw away. If you would like to book a viewing please call the Sales Team on 01534 670333.

Telephone: 01534 730 341

Email: sales@gaudin.je

22 Hill Street St Helier, Jersey JE2 4UA, Channel Islands

Key Features

For Sale	Beds: 3	Baths: 2
Area: 1302 ft ²	3 bedrooms, 2 bathrooms	In need of some TLC
Lounge with feature fireplace	Main house 2 bedrooms	Good size kitchen / breakfast room
Separate dining room	Low maintenance garden to the front	Flat with 1 bedroom

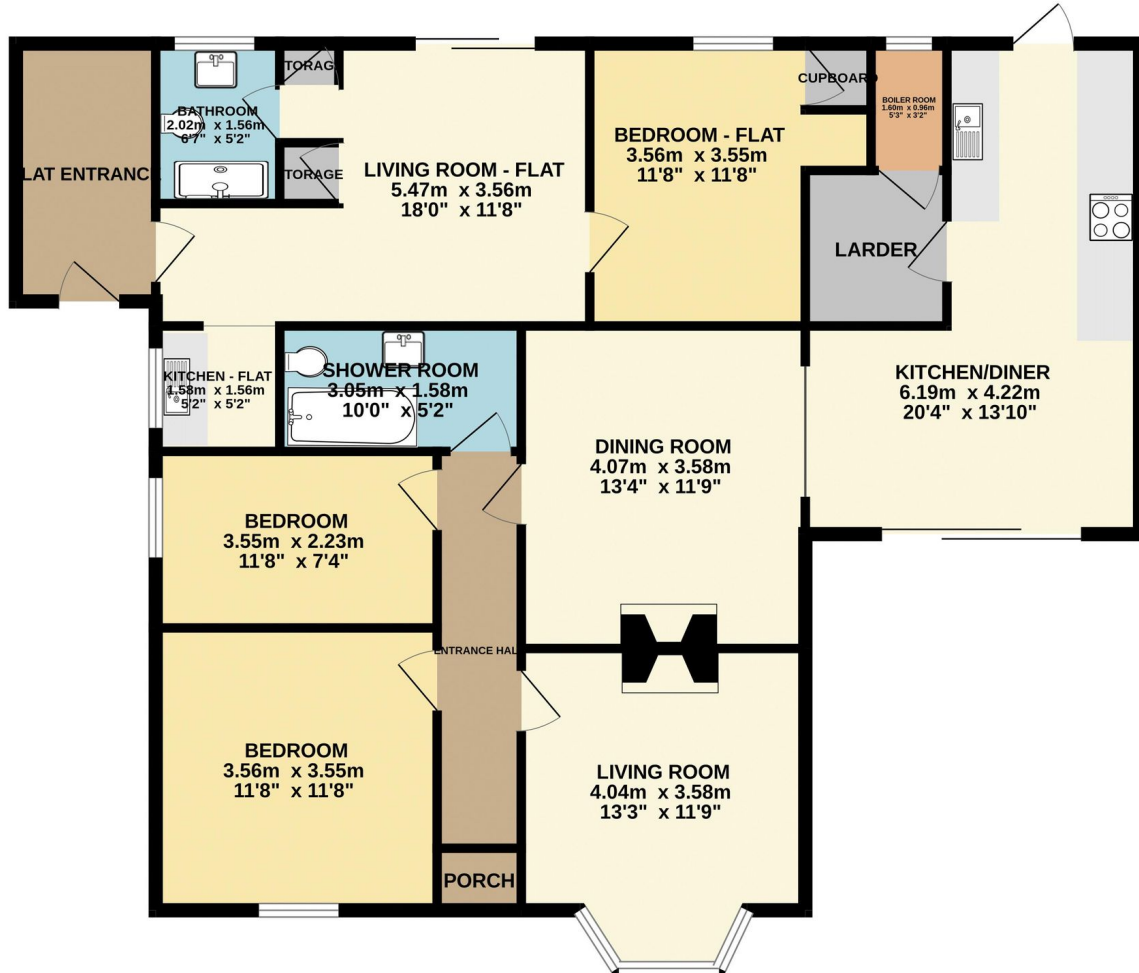
Telephone: 01534 730 341

Email: sales@gaudin.je

22 Hill Street St Helier, Jersey JE2 4UA, Channel Islands

Floor Plans

GROUND FLOOR
121.5 sq.m. (1308 sq.ft.) approx.



TOTAL FLOOR AREA: 121.5 sq.m. (1308 sq.ft.) approx.

Whilst every attempt has been made to ensure the accuracy of the floorplan contained here, measurements of doors, windows, rooms and any other items are approximate and no responsibility is taken for any error, omission or mis-statement. This plan is for illustrative purposes only and should be used as such by any prospective purchaser. The services, systems and appliances shown have not been tested and no guarantee as to their operability or efficiency can be given.

Made with Metropix ©2023

Telephone: 01534 730 341

Email: sales@gaudin.je

22 Hill Street St Helier, Jersey JE2 4UA, Channel Islands