



Highcliff, St John

St. John

£10,000,000

A stunning restoration and refurbishment of Highcliff in St John has transformed this traditional granite country estate, stables and paddocks, into a striking and characterful family home with magnificent infinity sea views across 15 acres of land above Bonne Nuit Bay on the North coast of Jersey. Whilst trying to be acutely respectful to the original Grade 4 listed building, this complete refurbishment has produced a stunning and traditional, yet also strikingly modern finish. The grounds too have been completely overhauled, with a heated lit swimming pool, mature woodlands and natural coastal headland. Electronically operated gates and magnificent exterior lighting design brings the granite facades and outdoor spaces to life with accent and ambient lighting around the property. The main h...

Telephone: 01534 730 341

Email: sales@gaudin.je

22 Hill Street St Helier, Jersey JE2 4UA, Channel Islands

 **GAUDIN CO**
The Property People since 1934

Gallery



Telephone: 01534 730 341
Email: sales@gaudin.je
22 Hill Street St Helier, Jersey JE2 4UA, Channel Islands



Property Details

Location: Highcliff, St John

A stunning restoration and refurbishment of Highcliff in St John has transformed this traditional granite country estate, stables and paddocks, into a striking and characterful family home with magnificent infinity sea views across 15 acres of land above Bonne Nuit Bay on the North coast of Jersey.

Whilst trying to be acutely respectful to the original Grade 4 listed building, this complete refurbishment has produced a stunning and traditional, yet also strikingly modern finish. The grounds too have been completely overhauled, with a heated lit swimming pool, mature woodlands and natural coastal headland. Electronically operated gates and magnificent exterior lighting design brings the granite facades and outdoor spaces to life with accent and ambient lighting around the property.

The main house is a marvel in its own right, with the DiCasa team's commitment to preserving its character shining through. Their signature color palette of elegant nude and taupe tones, paired with rich dark oak flooring and luxurious velvet carpets, graces the four-bedroom en-suite main residence. The grand hallway is refreshingly modern, adorned with exquisite traditional touches, such as vintage radiator covers, leading to an impressive walnut railing and wrought iron staircase. The rich, dark flooring extends into a formal drawing room and a spacious dining room, furnished with opulent fabrics, elegant rugs, and a carefully curated collection of antiques, maximizing the use of space. The sumptuous colour scheme includes bold and daring accents that add vibrancy without overwhelming. Their choice of accessories and sculptures provides an immediate sense of comfort and homeliness. The kitchen, often the heart of any home, showcases the DiCasa team's exceptional sense of design.

Highcliff's kitchen features an impeccable layout, a neutral and pale blue colour scheme, and a traditional four-oven Aga cooker. This neutral palette creates a welcoming and cozy atmosphere that is both minimalist and fresh. The kitchen has been reconfigured to include a spacious island with three breakfast chairs and a white marble top, evoking serenity, luxury, and comfort. Adjacent to the kitchen, a delightful patio, complete with Sonos sound system, offers the perfect outdoor entertaining space. As with all DiCasa properties, no expense has been spared in the fully equipped and spacious laundry and boot room, a necessity for any modern family. Highcliff also boasts a family room that has been beautifully decorated around a wood-burning stove, surround sound cinema TV, and blackout curtains. The thought of enjoying winter drinks and dinners around a roaring fire and log burner is truly inviting, especially with their half-moon luxe sofa. Wood-burning stoves are not only cozy but also more efficient and cleaner, making them an excellent alternative to a traditional fireplace. Sustainability is a key focus in every DiCasa home, with designers taking into account environmental, social, and economic impacts, showcasing a total commitment to sustainable construction and greener living.

The bedroom suites are set across the first and second floors of this grand property. The first-floor primary bedroom suite combines contemporary furniture shapes with traditional detailing. Gold gilt antique mirrors adorn the walls and walnut antique pieces align the bedroom. Each bedroom has the on brand DiCasa walk in wardrobe whilst the bathrooms in this vast home are en-suite, finished with underfloor heating, luxury sanitary ware and marble. One must remember that with every DiCasa aesthetic, the only thing one needs to bring when you move in - is your clothes. Even the bathrooms come complete with robes, towels and the obligatory Sonos surround sound.

The former garage has been converted into a luxurious two-bedroom en-suite guest cottage, in the same neutral and luxurious colour palette. Substantial in size the guest house has an open plan kitchen and sitting room with a romantic Juliet balcony that overlooks the grounds and swimming pool. Next to the pool there is also a self-contained pool house which contains a full kitchen, changing and shower facilities with inbuilt Sonos to the exterior walls making for fun pool parties. The pool itself has been completely refurbished with new contemporary lighting.

There is no doubt that Highcliff is one of a kind, set within lovely formal gardens, mature woodlands and natural coastal headland. A boundary pushing refurbishment set on a magical spot with a vista across undulating coastal landscape with the DiCasa hallmark of luxury.

For more information or to arrange a viewing please contact Jon Rabey on 07829881441 or email jonr@gaudin.je and/or Bradley Vowden on 07797763372 or bradleyv@gaudin.je

Telephone: 01534 730 341

Email: sales@gaudin.je

22 Hill Street St Helier, Jersey JE2 4UA, Channel Islands



Key Features

For Sale	Beds: 6	Baths: 7
Area: 8525 ft ²	A boundary pushing refurbishment project by DiCasa Homes	Multi-generational residence
Main house with four substantial bedroom suites	Two bedroom guest cottage	Heated swimming pool & pool house
Set within 15 acres of lovely formal gardens, mature woodlands & natural coastal headland	Spectacular uninterrupted sea views	Over 8,000 sq ft

Telephone: 01534 730 341

Email: sales@gaudin.je

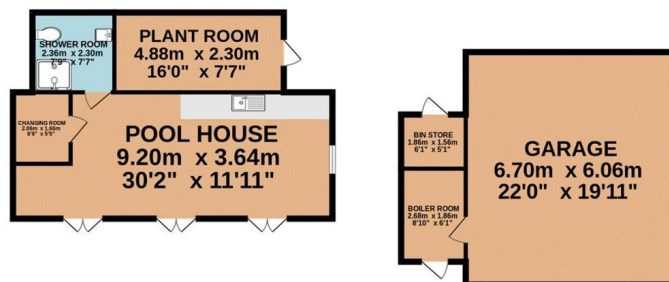
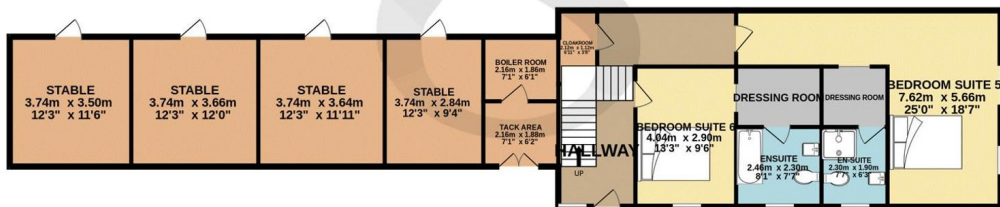
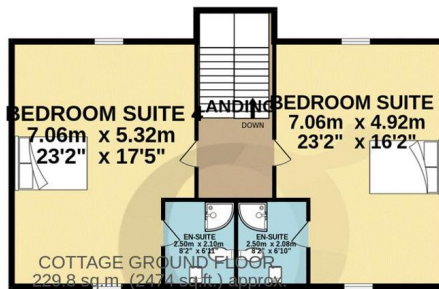
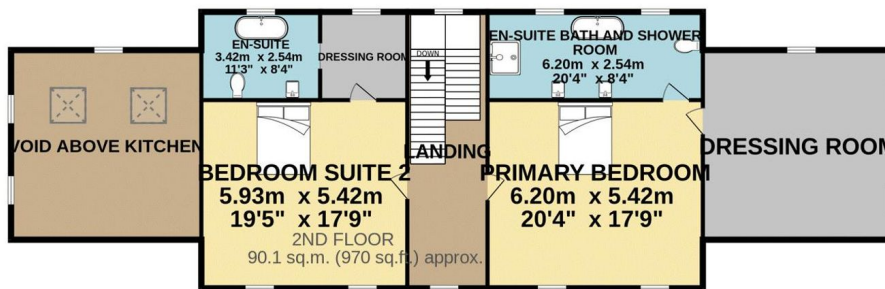
22 Hill Street St Helier, Jersey JE2 4UA, Channel Islands

Floor Plans

GROUND FLOOR
225.3 sq.m. (2425 sq.ft.) approx.



1ST FLOOR
174.8 sq.m. (1881 sq.ft.) approx.



COTTAGE 1ST FLOOR
72.1 sq.m. (776 sq.ft.) approx.



Telephone: 01534 730 341
Email: sales@gaudin.je

22 Hill Street St Helier, Jersey JE2 4UA, Channel Islands

