



16 Union Street, St Helier

St. Helier

£495,000

Investment and development opportunity located in Union Street benefitting from significant vehicular traffic through to the town centre. The building comprises of a commercial unit on the ground floor, with a current tenancy which expires at the beginning of 2027, and a 3 bedroom duplex apartment above with its own entrance. The property requires modernisation and the apartment is vacant and ready for a developer to come along and add their own stamp. A must-see property with huge potential. Contact Adam Lescop to arrange a viewing. Telephone 01534 670331 or email adaml@gaudin.je.

Telephone: 01534 730 341

Email: sales@gaudin.je

22 Hill Street St Helier, Jersey JE2 4UA, Channel Islands



Gallery



Telephone: 01534 730 341
Email: sales@gaudin.je
22 Hill Street St Helier, Jersey JE2 4UA, Channel Islands



Property Details

Location: 16 Union Street, St Helier

Investment and development opportunity located in Union Street benefitting from significant vehicular traffic through to the town centre. The building comprises of a commercial unit on the ground floor, with a current tenancy which expires at the beginning of 2027, and a 3 bedroom duplex apartment above with its own entrance. The property requires modernisation and the apartment is vacant and ready for a developer to come along and add their own stamp. A must-see property with huge potential. Contact Adam Lescop to arrange a viewing. Telephone 01534 670331 or email adaml@gaudin.je.

Telephone: 01534 730 341

Email: sales@gaudin.je

22 Hill Street St Helier, Jersey JE2 4UA, Channel Islands

Key Features

For Sale

Significant vehicular & pedestrian traffic

Located on the fringe of town

Commercial unit with duplex apartment

3 bedroom duplex with 2 receptions

Requires full modernisation

Commercial unit lease expires Jan 2027

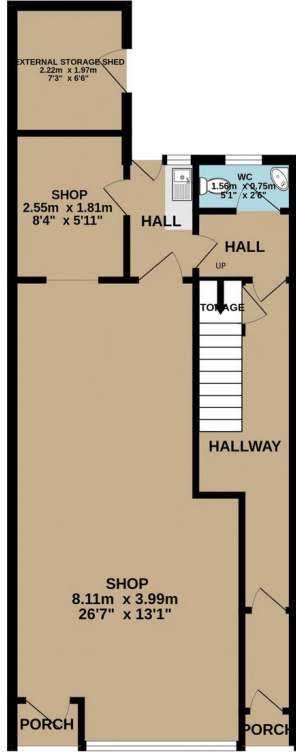
Telephone: 01534 730 341

Email: sales@gaudin.je

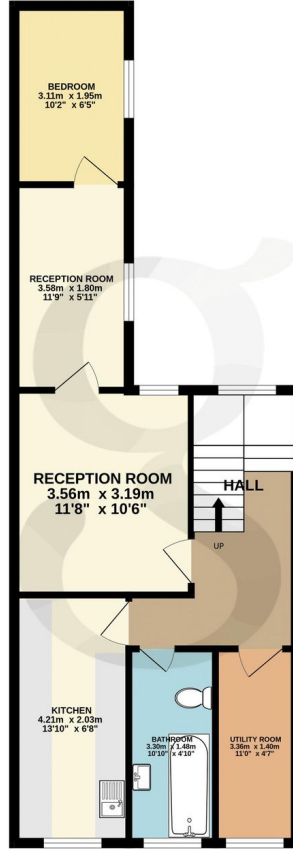
22 Hill Street St Helier, Jersey JE2 4UA, Channel Islands

Floor Plans

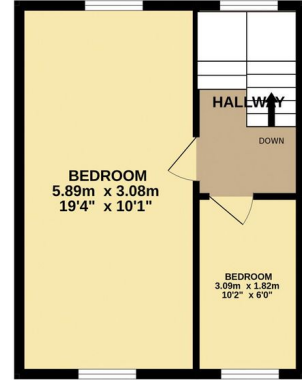
GROUND FLOOR
55.3 sq.m. (595 sq.ft.) approx.



1ST FLOOR
51.9 sq.m. (559 sq.ft.) approx.



2ND FLOOR
31.4 sq.m. (338 sq.ft.) approx.



TOTAL FLOOR AREA : 138.6 sq.m. (1492 sq.ft.) approx.

Whilst every attempt has been made to ensure the accuracy of the floorplan contained here, measurements of doors, windows, rooms and any other items are approximate and no responsibility is taken for any error, omission or mis-statement. This plan is for illustrative purposes only and should be used as such by any prospective purchaser. The services, systems and appliances shown have not been tested and no guarantee as to their operability or efficiency can be given.

Made with Metropix ©2024

Telephone: 01534 730 341

Email: sales@gaudin.je

22 Hill Street St Helier, Jersey JE2 4UA, Channel Islands