



## Flat 3, 2 Queens Road, St Helier

# £220,000

### St. Helier

Opportunity to purchase a 1 bedroom apartment in this stunning period property on the outskirts of St Helier. Situated within walking distance to the town centre, this mixed block of 7 apartments offers the opportunity to put your own stamp on your new home. Each apartment offers either an open plan living space or separate kitchen, 1 bathroom and good sized bedroom. This is a great opportunity if you are looking for a refurbishment project in an apartment with huge potential and character. Contact a member of the Sales Team for more information.

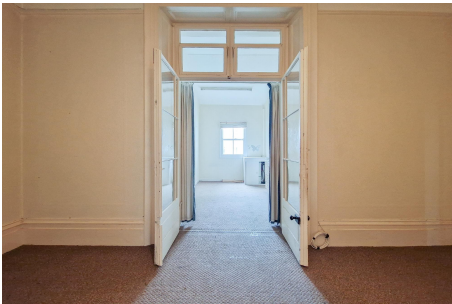
Telephone: 01534 730 341

Email: [sales@gaudin.je](mailto:sales@gaudin.je)

22 Hill Street St Helier, Jersey JE2 4UA, Channel Islands



# Gallery



Telephone: 01534 730 341  
Email: [sales@gaudin.je](mailto:sales@gaudin.je)  
22 Hill Street St Helier, Jersey JE2 4UA, Channel Islands



# Property Details

**Location:** Flat 3, 2 Queens Road, St Helier

Opportunity to purchase a 1 bedroom apartment in this stunning period property on the outskirts of St Helier. Situated within walking distance to the town centre, this mixed block of 7 apartments offers the opportunity to put your own stamp on your new home.

Each apartment offers either an open plan living space or separate kitchen, 1 bathroom and good sized bedroom. This is a great opportunity if you are looking for a refurbishment project in an apartment with huge potential and character. Contact a member of the Sales Team for more information.

**Telephone:** 01534 730 341

**Email:** [sales@gaudin.je](mailto:sales@gaudin.je)

22 Hill Street St Helier, Jersey JE2 4UA, Channel Islands

# Key Features

For Sale	Beds: 1	Baths: 1
Type: Apartment	Iconic building	Investment opportunity
1 bedroom, 1 bathroom	In need of refurbishment throughout	Walk to town centre
FLYING FREEHOLD	Mix of open plan living or separate kitchen	Period features and high ceilings throughout

Telephone: 01534 730 341

Email: [sales@gaudin.je](mailto:sales@gaudin.je)

22 Hill Street St Helier, Jersey JE2 4UA, Channel Islands

# Floor Plans

GROUND FLOOR  
54.5 sq.m. (586 sq.ft.) approx.



TOTAL FLOOR AREA : 54.5 sq.m. (586 sq.ft.) approx.

Whilst every attempt has been made to ensure the accuracy of the floorplan contained here, measurements of doors, windows, rooms and any other items are approximate and no responsibility is taken for any error, omission or mis-statement. This plan is for illustrative purposes only and should be used as such by any prospective purchaser. The services, systems and appliances shown have not been tested and no guarantee as to their operability or efficiency can be given.  
Made with Metropix ©2023

Telephone: 01534 730 341

Email: [sales@gaudin.je](mailto:sales@gaudin.je)

22 Hill Street St Helier, Jersey JE2 4UA, Channel Islands