



36 David Place, St Helier

£365,000

St. Helier

This lovely property welcomes you through an inviting entrance hall, leading to a delightful kitchen/living room that exudes warmth and charm. Boasting two generously sized double bedrooms and a contemporary shower room equipped with underfloor heating, the home seamlessly combines comfort and modern convenience. Positioned on the outskirts of town, tailored for professionals embarking on their journey into homeownership, it presents an ideal opportunity for those seeking a stylish and well-appointed abode. Don't miss the chance to make this bright and immaculate home your first step on the property ladder.

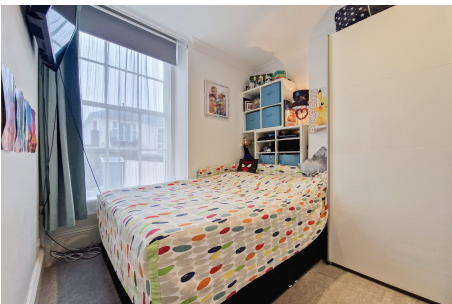
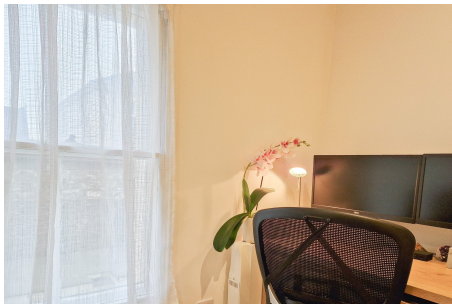
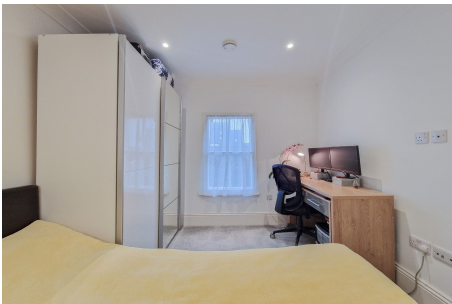
Telephone: 01534 730 341

Email: sales@gaudin.je

22 Hill Street St Helier, Jersey JE2 4UA, Channel Islands



Gallery



Property Details

Location: 36 David Place, St Helier

This lovely property welcomes you through an inviting entrance hall, leading to a delightful kitchen/living room that exudes warmth and charm. Boasting two generously sized double bedrooms and a contemporary shower room equipped with underfloor heating, the home seamlessly combines comfort and modern convenience.

Positioned on the outskirts of town, tailored for professionals embarking on their journey into homeownership, it presents an ideal opportunity for those seeking a stylish and well-appointed abode. Don't miss the chance to make this bright and immaculate home your first step on the property ladder.

Telephone: 01534 730 341

Email: sales@gaudin.je

22 Hill Street St Helier, Jersey JE2 4UA, Channel Islands

Key Features

For Sale	Beds: 2	Baths: 1
Type: Apartment	Area: 495 ft ²	2 bedrooms, 1 bathroom
Lovely and bright open plan living space	Small block of only 5 apartments	Both bedrooms are doubles
Town outskirts	Immaculately presented	SHARE TRANSFER

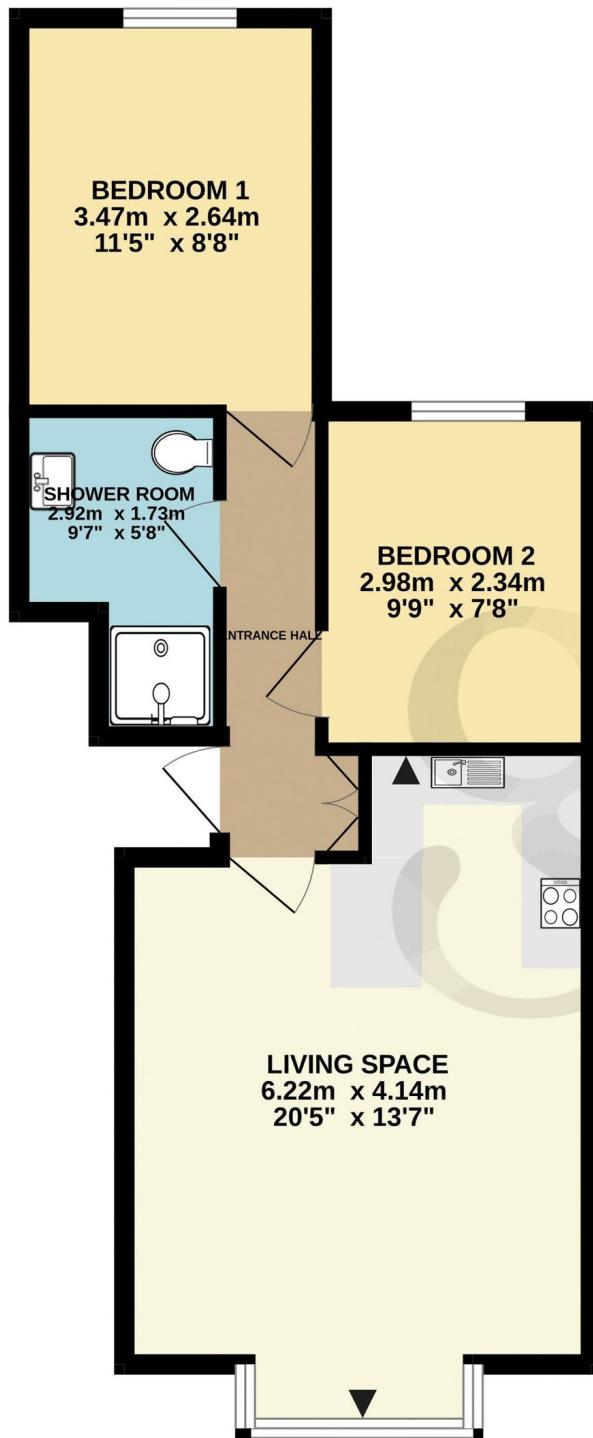
Telephone: 01534 730 341

Email: sales@gaudin.je

22 Hill Street St Helier, Jersey JE2 4UA, Channel Islands

Floor Plans

GROUND FLOOR



Whilst every attempt has been made to ensure the accuracy of the floorplan contained here, measurements of doors, windows, rooms and any other items are approximate and no responsibility is taken for any error, omission or mis-statement. This plan is for illustrative purposes only and should be used as such by any prospective purchaser. The services, systems and appliances shown have not been tested and no guarantee as to their operability or efficiency can be given.
Made with Metropix ©2024

Telephone: 01534 730 341

Email: sales@gaudin.je

22 Hill Street St Helier, Jersey JE2 4UA, Channel Islands