



Tower View, St Martin

St. Martin

£760,000

With the finishing touches being applied, this four-bedroom, two-bathroom family home offers the perfect blend of contemporary design and efficient living. On the ground floor the property boasts a spacious living room which seamlessly integrates into a stylish kitchen boasting an extensive range of Bosch appliances and large breakfast bar perfect for entertaining. In addition there is a conservatory overlooking the rear garden and cloakroom on the ground floor level. On the first floor you will find three bedrooms and house bathroom. The top floor boasts a primary bedroom with luxurious bathroom. Externally you can enjoy the convenience of a south-west facing garden to the rear as well as parking for at least two vehicles at the front of the property. The property is also strategically si...

Telephone: 01534 730 341

Email: sales@gaudin.je

22 Hill Street St Helier, Jersey JE2 4UA, Channel Islands

 **GAUDIN CO**
The Property People since 1934

Gallery



Property Details

Location: Tower View, St Martin

With the finishing touches being applied, this four-bedroom, two-bathroom family home offers the perfect blend of contemporary design and efficient living.

On the ground floor the property boasts a spacious living room which seamlessly integrates into a stylish kitchen boasting an extensive range of Bosch appliances and large breakfast bar perfect for entertaining. In addition there is a conservatory overlooking the rear garden and cloakroom on the ground floor level. On the first floor you will find three bedrooms and house bathroom. The top floor boasts a primary bedroom with luxurious bathroom.

Externally you can enjoy the convenience of a south-west facing garden to the rear as well as parking for at least two vehicles at the front of the property. The property is also strategically situated near local shops and the Zoo.

For more information or to arrange a viewing please call us on 01534 670333 or email sales@gaudin.je

Telephone: 01534 730 341

Email: sales@gaudin.je

22 Hill Street St Helier, Jersey JE2 4UA, Channel Islands

Key Features

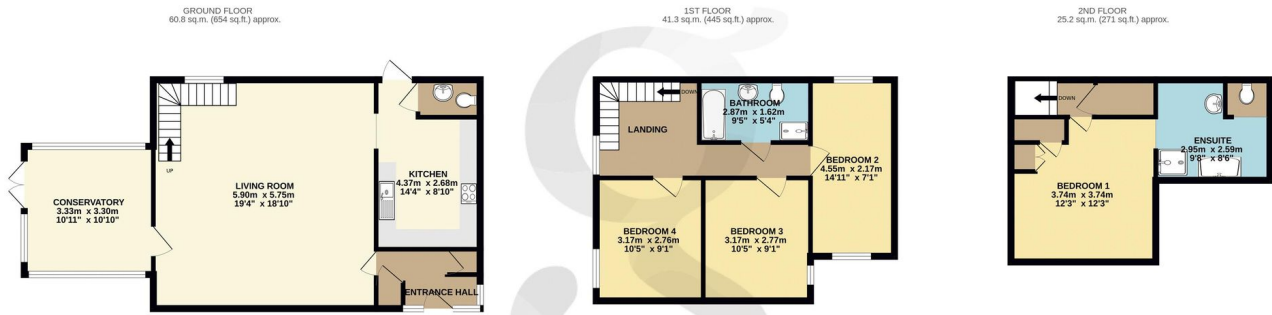
For Sale	Beds: 4	Baths: 2
Area: 1367 ft ²	Open plan living	Stylish, modern bathrooms and kitchen
Close to local shops and the Zoo	Parking for two vehicles	South west facing garden
Extensive range of Bosch appliances	Refurbishment nearing completion	Available immediately

Telephone: 01534 730 341

Email: sales@gaudin.je

22 Hill Street St Helier, Jersey JE2 4UA, Channel Islands

Floor Plans



TOTAL FLOOR AREA: 127.3 sq.m. (1370 sq.ft.) approx.

Whilst every attempt has been made to ensure the accuracy of the floorplan contained here, measurements of doors, windows, rooms and any other items are approximate and no responsibility is taken for any error, omission or mis-statement. This plan is for illustrative purposes only and should be used as such by any prospective purchaser. The services, systems and appliances shown have not been tested and no guarantee as to their operability or efficiency can be given.
Made with Metropix ©2024

Telephone: 01534 730 341

Email: sales@gaudin.je

22 Hill Street St Helier, Jersey JE2 4UA, Channel Islands