



L'Amarrage, St Clement

St. Clement

£1,050,000

This detached and generously proportioned bungalow presents an ideal opportunity for downsizing, boasting a convenient location on a well-serviced bus route and nestled on a private road just a stone's throw from the beach. While the property has been well maintained, it offers scope for modernization to suit personal preferences. Facing west, the bungalow comprises a kitchen/breakfast room, utility room, a large lounge/diner, two double bedrooms each with ensuite bathrooms, a smaller bedroom/study, and a WC. The property enjoys a sizable garden, perfect for outdoor living, as well as the added convenience of a double garage and off-road parking for two cars, with potential for further expansion. With its desirable location, ample living space, and scope for customization, this bungalow offers...

Telephone: 01534 730 341

Email: sales@gaudin.je

22 Hill Street St Helier, Jersey JE2 4UA, Channel Islands

 **GAUDIN CO**
The Property People since 1934

Gallery



Telephone: 01534 730 341
Email: sales@gaudin.je
22 Hill Street St Helier, Jersey JE2 4UA, Channel Islands



Property Details

Location: L'Amarrage, St Clement

This detached and generously proportioned bungalow presents an ideal opportunity for downsizing, boasting a convenient location on a well-serviced bus route and nestled on a private road just a stone's throw from the beach. While the property has been well maintained, it offers scope for modernization to suit personal preferences.

Facing west, the bungalow comprises a kitchen/breakfast room, utility room, a large lounge/diner, two double bedrooms each with ensuite bathrooms, a smaller bedroom/study, and a WC. The property enjoys a sizable garden, perfect for outdoor living, as well as the added convenience of a double garage and off-road parking for two cars, with potential for further expansion.

With its desirable location, ample living space, and scope for customization, this bungalow offers an exciting opportunity to create a comfortable and personalized home.

Telephone: 01534 730 341

Email: sales@gaudin.je

22 Hill Street St Helier, Jersey JE2 4UA, Channel Islands

Key Features

For Sale	Beds: 3	Baths: 2
Type: Bungalow	3 bedrooms , 2 bathrooms	Great location just across from the beach
generously proportioned bungalow	Large lounge / diner	Kitchen / breakfast
Utility and cloakroom	Nicely maintained	Across the road from the beach
Best bus route in Jersey	circa 1800 sq ft	

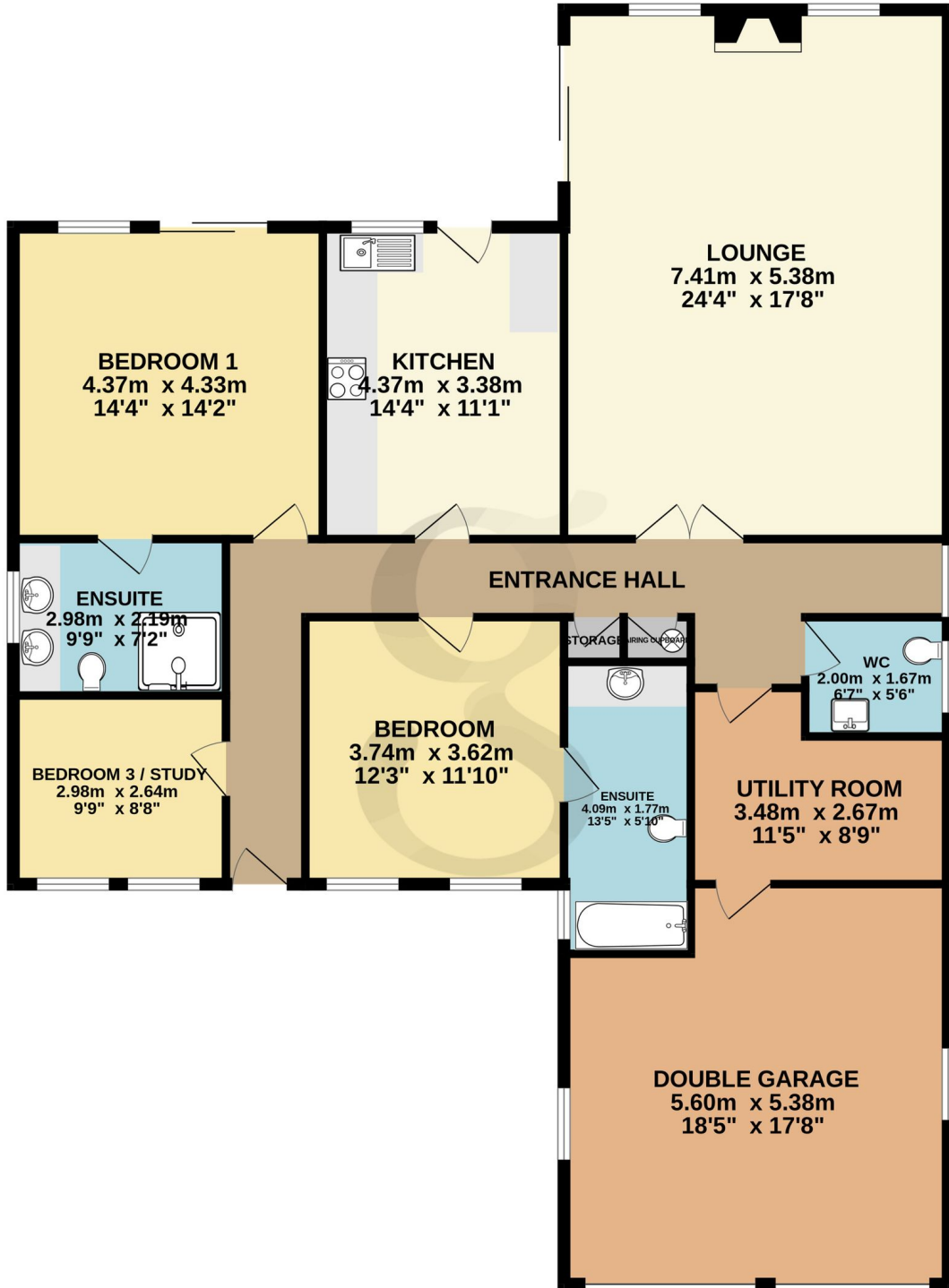
Telephone: 01534 730 341

Email: sales@gaudin.je

22 Hill Street St Helier, Jersey JE2 4UA, Channel Islands

Floor Plans

GROUND FLOOR
166.3 sq.m. (1790 sq.ft.) approx.



TOTAL FLOOR AREA : 166.3 sq.m. (1790 sq.ft.) approx.

Whilst every attempt has been made to ensure the accuracy of the floorplan contained here, measurements of doors, windows, rooms and any other items are approximate and no responsibility is taken for any error, omission or mis-statement. This plan is for illustrative purposes only and should be used as such by any prospective purchaser. The services, systems and appliances shown have not been tested and no guarantee as to their operability or efficiency can be given.

Made with Metropix ©2024

Telephone: 01534 730 341

Email: sales@gaudin.je

22 Hill Street St Helier, Jersey JE2 4UA, Channel Islands