



## Driftwood, St Brelade

St. Brelade

# £1,325,000

Driftwood is located in a quiet and sought-after area near Les Quennevais School and other local amenities all within easy access making this an ideal family home. This stunning home is in walk in condition and perfect for those who seek modern luxury living with the latest technological advancements, including under floor heating throughout and computerised lighting systems. The kitchen is perfect for those culinary enthusiasts and is equipped with top-of-the-range appliances, including fridge, oven, hob, and dishwasher, all from reputable brands. The kitchens are designed with functionality in mind, and the layouts are perfectly optimised for efficient cooking and food preparation. The open plan living offers functionality and easy living and is ideal for those who love entertaining with...

Telephone: 01534 730 341

Email: [sales@gaudin.je](mailto:sales@gaudin.je)

22 Hill Street St Helier, Jersey JE2 4UA, Channel Islands



# Gallery



Telephone: 01534 730 341  
Email: sales@gaudin.je  
22 Hill Street St Helier, Jersey JE2 4UA, Channel Islands



# Property Details

**Location:** Driftwood, St Brelade

Driftwood is located in a quiet and sought-after area near Les Quennevais School and other local amenities all within easy access making this an ideal family home.

This stunning home is in walk in condition and perfect for those who seek modern luxury living with the latest technological advancements, including under floor heating throughout and computerised lighting systems

The kitchen is perfect for those culinary enthusiasts and is equipped with top-of-the-range appliances, including fridge, oven, hob, and dishwasher, all from reputable brands. The kitchens are designed with functionality in mind, and the layouts are perfectly optimised for efficient cooking and food preparation. They open plan living offers functionality and easy living and is ideal for those who love entertaining with easy access to the enclosed rear garden.

Each of the three bedrooms are great size doubles, all with fitted wardrobes whilst the primary bedroom also having the added benefit of an en suite bathroom. The bathrooms are another highlight in this property. They feature high-end fixtures and fittings, such as designer tiles, modern shower systems, and elegant vanities.

There is also a separate utility room along with a study making this property a perfect all round home.

Externally there is an enclosed, low maintenance west facing garden with a decked area ideal for alfresco dining in the summer. There is a single garage and parking for 3 cars with e-charging point. This wonderful home is a must view!

**Telephone: 01534 730 341**

**Email: [sales@gaudin.je](mailto:sales@gaudin.je)**

22 Hill Street St Helier, Jersey JE2 4UA, Channel Islands

# Key Features

For Sale	Beds: 3	Baths: 2
Area: 1916 ft <sup>2</sup>	3 bedrooms, 2 bathrooms	Recently developed modern home
Contemporary and stylish kitchen	Open plan living	Separate study
Good size utility room	Underfloor heating throughout	Sunny and enclosed rear garden
Single garage plus parking for 3 cars	Sought after location for schools and amenities	

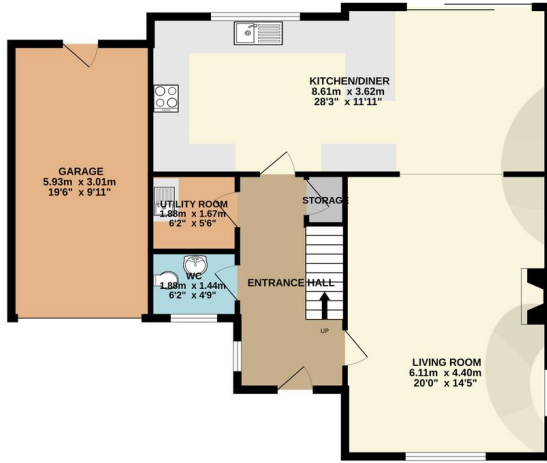
Telephone: 01534 730 341

Email: [sales@gaudin.je](mailto:sales@gaudin.je)

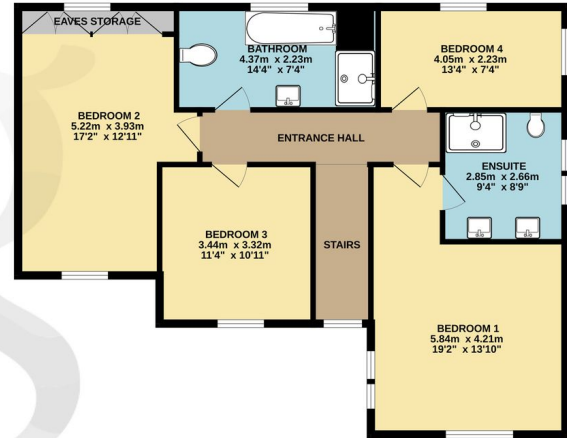
22 Hill Street St Helier, Jersey JE2 4UA, Channel Islands

# Floor Plans

GROUND FLOOR  
91.1 sq.m. (981 sq.ft.) approx.



1ST FLOOR  
87.4 sq.m. (941 sq.ft.) approx.



TOTAL FLOOR AREA: 178.5 sq.m. (1922 sq.ft.) approx.

Whilst every attempt has been made to ensure the accuracy of the floorplan contained here, measurements of doors, windows, rooms and any other items are approximate and no responsibility is taken for any error, omission or mis-statement. This plan is for illustrative purposes only and should be used as such by any prospective purchaser. The services, systems and appliances shown have not been tested and no guarantee as to their operability or efficiency can be given.  
Made with Metropix ©2024

Telephone: 01534 730 341

Email: sales@gaudin.je

22 Hill Street St Helier, Jersey JE2 4UA, Channel Islands