

Baycroft - Apartment Three, St Lawrence

£1,600,000

St. Lawrence

Built by Ashbe Construction for Melrose Homes, this exclusive development comprises seven lavish apartments redefining coastal living. Meticulously designed, Baycroft seamlessly integrates with its surroundings, embodying unique charm and character. Situated for utmost convenience, the apartments are a stone's throw from the beach whilst the western cycle path provides easy access to St. Helier and St. Aubin's Harbour where you can enjoy an abundance of dining, shopping, and entertainment options. This first floor apartment boasts three double bedrooms, two bathrooms, large open plan kitchen/dining/living space and separate utility room. Externally the apartments benefit from a large south facing terrace with views over St Aubin's Bay, single garage with electric charge point and allocated...

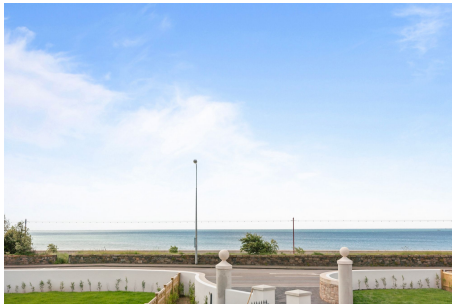
Telephone: 01534 730 341

Email: sales@gaudin.je

22 Hill Street St Helier, Jersey JE2 4UA, Channel Islands

 **GAUDIN CO**
The Property People since 1934

Gallery



Telephone: 01534 730 341
Email: sales@gaudin.je
22 Hill Street St Helier, Jersey JE2 4UA, Channel Islands



Property Details

Location: Baycroft - Apartment Three, St Lawrence

Built by Ashbe Construction for Melrose Homes, this exclusive development comprises seven lavish apartments redefining coastal living. Meticulously designed, Baycroft seamlessly integrates with its surroundings, embodying unique charm and character. Situated for utmost convenience, the apartments are a stone's throw from the beach whilst the western cycle path provides easy access to St. Helier and St. Aubin's Harbour where you can enjoy an abundance of dining, shopping, and entertainment options.

This first floor apartment boasts three double bedrooms, two bathrooms, large open plan kitchen/dining/living space and separate utility room. Externally the apartments benefit from a large south facing terrace with views over St Aubin's Bay, single garage with electric charge point and allocated parking space as well as visitor spaces.

For more information or to arrange a viewing at this luxurious coastal apartment please contact Jon Rabey on 07829881441 or email jonr@gaudin.je, and/or Bradley Vowden on 07797763372 or bradleyv@gaudin.je.

Tenure: Flying Freehold

Telephone: 01534 730 341

Email: sales@gaudin.je

22 Hill Street St Helier, Jersey JE2 4UA, Channel Islands

Key Features

For Sale	Beds: 3	Baths: 2
Type: Apartment	Area: 1270 ft ²	Directly opposite the beach
South facing terrace with views over St Aubin's Bay	Allocated garage with electric charge point, parking & visitor spaces	Lift access
Use of the communal gardens	Short drive to Jersey Airport	Easy access to St Helier & St Aubin along the promenade & western cycle path
Built by Ashbe Construction for Melrose Homes		

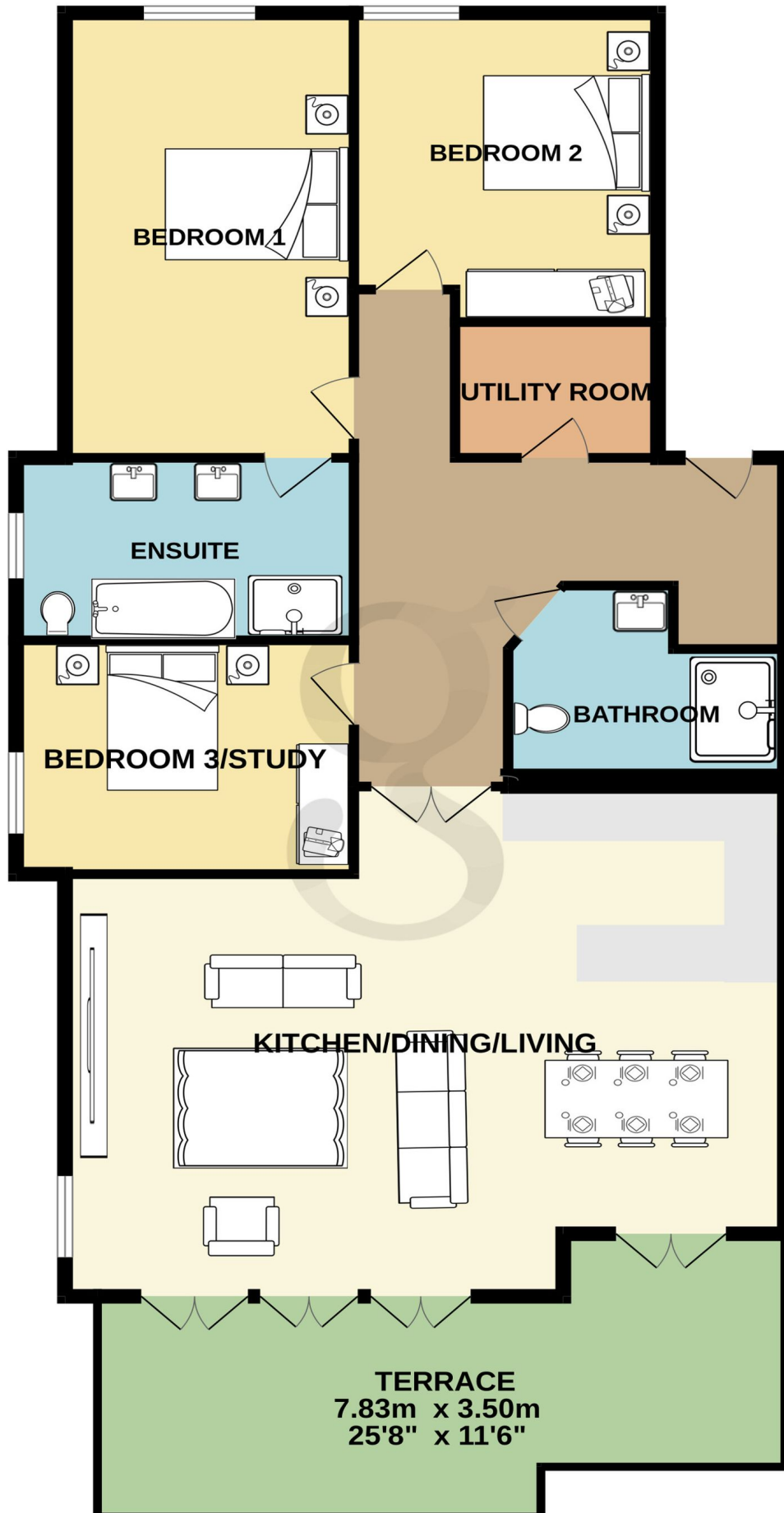
Telephone: 01534 730 341

Email: sales@gaudin.je

22 Hill Street St Helier, Jersey JE2 4UA, Channel Islands

Floor Plans

FIRST FLOOR
118.7 sq.m. (1278 sq.ft.) approx.



Telephone: 01534 730 341
Email: sales@gaudin.je

22 Hill Street St Helier, Jersey JE2 4UA, Channel Islands

