



# 184 Le Clos Des Sables, St Brelade

# £515,000

## St. Brelade

An apartment that feels like a house! This bright and airy upper floor duplex apartment is situated in a well established development in St Brelade. The property, which is in need of some modernisation, offers lots of natural light throughout. Accessed from the second level, this well proportioned apartment comprises of entrance hall, sitting/dining room with access onto a balcony, and a separate kitchen. Upstairs you will find 3 bedrooms and the bathroom. The apartment comes with a garage and ample on-road parking nearby. Call now to arrange a viewing!!!

Telephone: 01534 730 341

Email: [sales@gaudin.je](mailto:sales@gaudin.je)

22 Hill Street St Helier, Jersey JE2 4UA, Channel Islands



# Gallery



# Property Details

**Location:** 184 Le Clos Des Sables, St Brelade

An apartment that feels like a house! This bright and airy upper floor duplex apartment is situated in a well established development in St Brelade. The property, which is in need of some modernisation, offers lots of natural light throughout. Accessed from the second level, this well proportioned apartment comprises of entrance hall, sitting/dining room with access onto a balcony, and a separate kitchen. Upstairs you will find 3 bedrooms and the bathroom. The apartment comes with a garage and ample on-road parking nearby. Call now to arrange a viewing!!!

**Telephone:** 01534 730 341

**Email:** [sales@gaudin.je](mailto:sales@gaudin.je)

22 Hill Street St Helier, Jersey JE2 4UA, Channel Islands

# Key Features

For Sale	Beds: 3	Baths: 1
Type: Apartment	Area: 732 ft <sup>2</sup>	3 bedrooms, 1 bathroom
Duplex apartment	Separate kitchen	West / North facing balcony
Garage plus plenty of on-road parking	Popular location	Flying Freehold
733 sq ft		

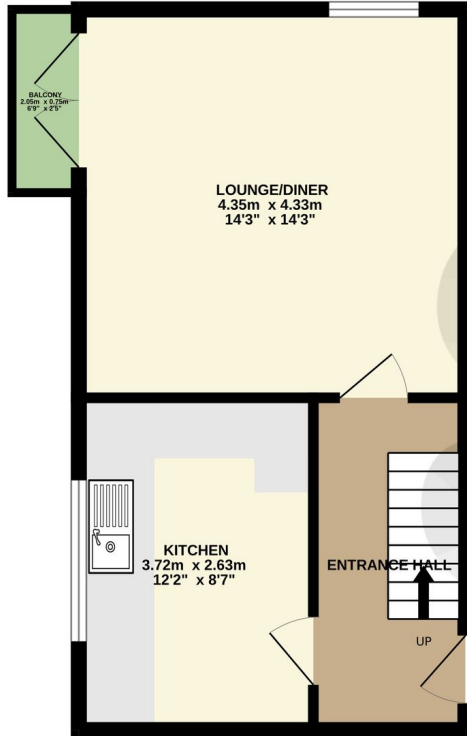
Telephone: 01534 730 341

Email: [sales@gaudin.je](mailto:sales@gaudin.je)

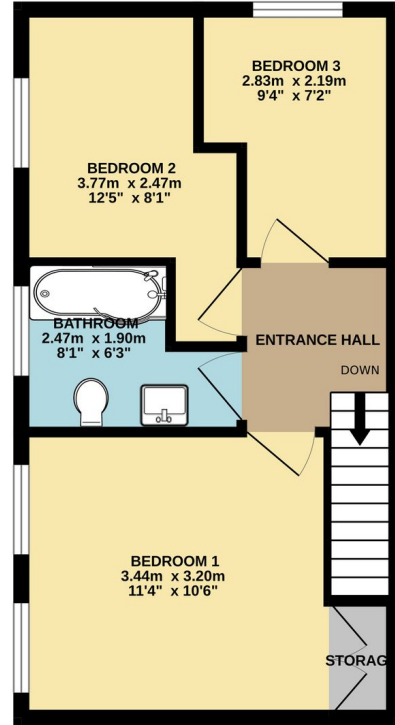
22 Hill Street St Helier, Jersey JE2 4UA, Channel Islands

# Floor Plans

GROUND FLOOR  
35.0 sq.m. (376 sq.ft.) approx.



1ST FLOOR  
33.1 sq.m. (356 sq.ft.) approx.



TOTAL FLOOR AREA: 68.1 sq.m. (733 sq.ft.) approx.

Whilst every attempt has been made to ensure the accuracy of the floorplan contained here, measurements of doors, windows, rooms and any other items are approximate and no responsibility is taken for any error, omission or mis-statement. This plan is for illustrative purposes only and should be used as such by any prospective purchaser. The services, systems and appliances shown have not been tested and no guarantee as to their operability or efficiency can be given.  
Made with Metropix ©2024

Telephone: 01534 730 341

Email: sales@gaudin.je

22 Hill Street St Helier, Jersey JE2 4UA, Channel Islands