



The Farmhouse, St Lawrence

£1,800,000

St. Lawrence

A stunning restoration and refurbishment of this traditional granite farmhouse, filled with character and charm, whilst keeping an eye on the future with modern and eco friendly techniques and products integrated throughout this beautiful home. Set in the heart of rural St Lawrence, this magnificent home offers a perfect blend of historical charm and modern luxury with the ground floor of the main house offering a newly fitted kitchen with marble worktops, Rangemaster oven, a separate island with solid work top, ideal for those who love cooking and entertaining. As you walk from the kitchen and enter the lounge, you are greeted by a stunning original granite fireplace, with original beams, making this a stunning room in which to relax and unwind after a long day. Original features can be fo...

Telephone: 01534 730 341

Email: sales@gaudin.je

22 Hill Street St Helier, Jersey JE2 4UA, Channel Islands



Gallery



Telephone: 01534 730 341
Email: sales@gaudin.je
22 Hill Street St Helier, Jersey JE2 4UA, Channel Islands



Property Details

Location: The Farmhouse, St Lawrence

A stunning restoration and refurbishment of this traditional granite farmhouse, filled with character and charm, whilst keeping an eye on the future with modern and eco friendly techniques and products integrated throughout this beautiful home.

Set in the heart of rural St Lawrence, this magnificent home offers a perfect blend of historical charm and modern luxury with the ground floor of the main house offering a newly fitted kitchen with marble worktops, Rangemaster oven, a separate island with solid work top, ideal for those who love cooking and entertaining. As you walk from the kitchen and enter the lounge, you are greeted by a stunning original granite fireplace, with original beams, making this a stunning room in which to relax and unwind after a long day. Original features can be found all around this property with the dining room also offering another little bit of history with its fully restored feature wall and fireplace.

Finishing the ground floor is a separate utility room and cloakroom. On the first floor you will find two good size double bedrooms, each with ensuite, and a house bathroom, whilst the on the second floor you will find a further two double bedrooms.

The adjoining cottage has also kept its rustic charm, as demonstrated in the lounge with exposed wood work and granite, making this a cosy country retreat for all whilst also providing access to the south facing patio. The modern kitchen/ diner is bright, fully equipped with plenty of work top space and room for a dining table. On the first floor there is a good size double with house bathroom and another double on the second floor.

Both properties boast enchanting south-facing gardens, providing a tranquil oasis for outdoor living and entertaining, whilst there is also ample parking with both the farmhouse and cottage providing parking for four cars each.

This magnificent home offers a perfect blend of historical charm and modern luxury, nestled in a serene rural setting. Don't miss the opportunity to own this remarkable 2nd generation granite farmhouse. It is a true gem that combines history, luxury, and a picturesque rural lifestyle. Contact us now to arrange a viewing and make this extraordinary property your own.

Telephone: 01534 730 341

Email: sales@gaudin.je

22 Hill Street St Helier, Jersey JE2 4UA, Channel Islands

Key Features

For Sale	Beds: 6	Baths: 4
Area: 2885 ft ²	6 bedrooms, 4 bathrooms large or two generation home	4 bedroom Farmhouse
2 bedroom Cottage	Fully restored & refurbished	Period features throughout
South facing gardens	Parking for 8 cars in total	

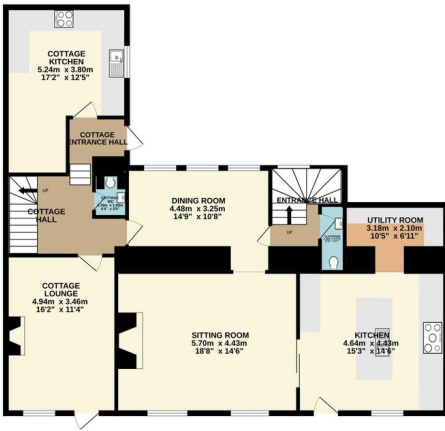
Telephone: 01534 730 341

Email: sales@gaudin.je

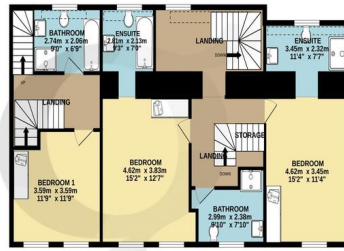
22 Hill Street St Helier, Jersey JE2 4UA, Channel Islands

Floor Plans

GROUND FLOOR
114.1 sq.m. (1229 sq.ft.) approx.



1ST FLOOR
94.5 sq.m. (1017 sq.ft.) approx.



2ND FLOOR
59.8 sq.m. (643 sq.ft.) approx.



TOTAL FLOOR AREA: 268.4 sq.m. (2889 sq.ft.) approx.

Whilst every attempt has been made to ensure the accuracy of the floorplan contained here, measurements of doors, windows, rooms and any other items are approximate and no responsibility is taken for any error, omission or mis-statement. This plan is for illustrative purposes only and should be used as such by any prospective purchaser. The services, systems and appliances shown have not been tested and no guarantee as to their operability or efficiency can be given.

Made with Metropix ©2024

Telephone: 01534 730 341

Email: sales@gaudin.je

22 Hill Street St Helier, Jersey JE2 4UA, Channel Islands