



Ben More, Grouville

Grouville

£1,395,000

Located in a highly sought-after location, this charming bungalow offers the perfect blend of tranquillity and convenience. Boasting private shared access to the beach, you can indulge in the serene beauty of the coastline whenever you please. Golf enthusiasts will appreciate the short walk to the first tee at the prestigious Royal Jersey Golf Course, while the stunning Bay of Grouville is just a stone's throw away, providing endless opportunities for relaxation and recreation. This cost-effective home features energy-saving solar panels, ensuring low utility bills and a smaller carbon footprint. The lovely conservatory provides a seamless transition to the garden, creating a tranquil space to enjoy nature year-round. The spacious living room, complete with a cosy wood-burning stove, is per...

Telephone: 01534 730 341

Email: sales@gaudin.je

22 Hill Street St Helier, Jersey JE2 4UA, Channel Islands

 **GAUDIN CO**
The Property People since 1934

Gallery



Property Details

Location: Ben More, Grouville

Located in a highly sought-after location, this charming bungalow offers the perfect blend of tranquillity and convenience. Boasting private shared access to the beach, you can indulge in the serene beauty of the coastline whenever you please. Golf enthusiasts will appreciate the short walk to the first tee at the prestigious Royal Jersey Golf Course, while the stunning Bay of Grouville is just a stone's throw away, providing endless opportunities for relaxation and recreation.

This cost-effective home features energy-saving solar panels, ensuring low utility bills and a smaller carbon footprint. The lovely conservatory provides a seamless transition to the garden, creating a tranquil space to enjoy nature year-round. The spacious living room, complete with a cosy wood-burning stove, is perfect for family gatherings and quiet evenings alike.

Externally the property boasts a double garage with workshop area and ample forecourt parking, accommodating multiple vehicles with ease. This fantastic bungalow offers an unparalleled lifestyle in an enviable location. Don't miss the chance to make this exceptional property your own. For more information or to arrange a viewing please call us on 01534 670333 or email sales@gaudin.je

Telephone: 01534 730 341

Email: sales@gaudin.je

22 Hill Street St Helier, Jersey JE2 4UA, Channel Islands



Key Features

For Sale	Beds: 4	Baths: 2
Area: 1959 ft ²	Bungalow in sought after location	Private shared access to the beach
Walk to the first tee at the Royal Jersey Golf Course	Enjoy the Bay of Grouville just a stone's throw away	Cost-effective home with energy-saving solar panels
Lovely conservatory with access to the garden	Spacious living room with wood burning stove	Modern kitchen/diner with breakfast bar
Double garage with workshop area	Ample forecourt parking	

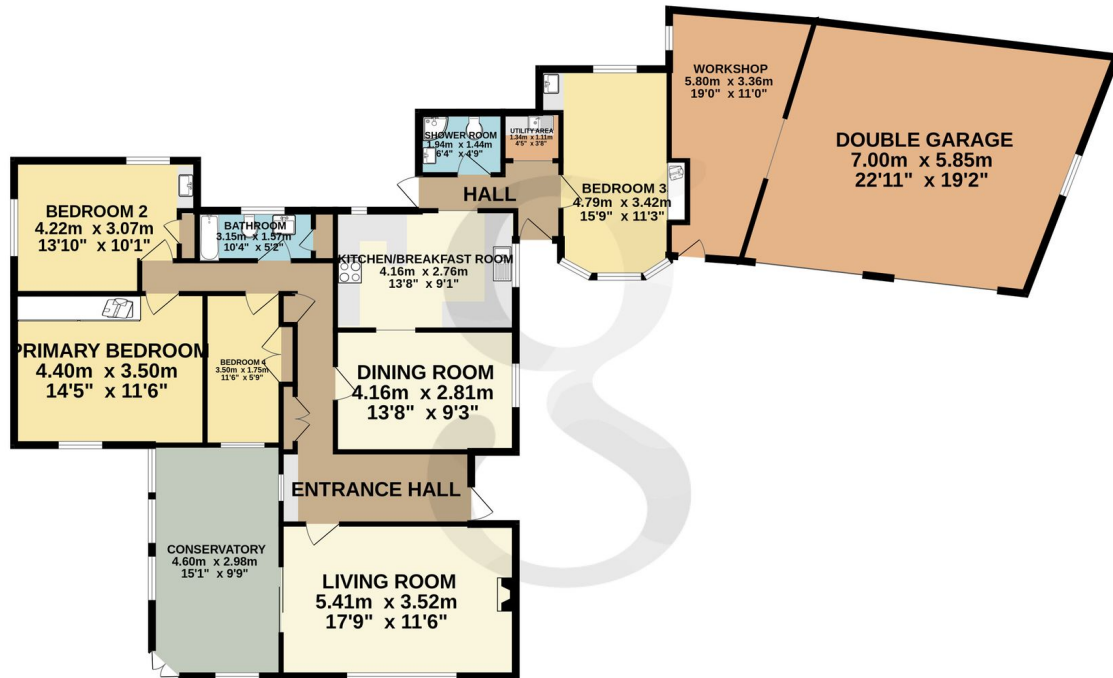
Telephone: 01534 730 341

Email: sales@gaudin.je

22 Hill Street St Helier, Jersey JE2 4UA, Channel Islands

Floor Plans

GROUND FLOOR
183.3 sq.m. (1973 sq.ft.) approx.



TOTAL FLOOR AREA: 183.3 sq.m. (1973 sq.ft.) approx.

Whilst every attempt has been made to ensure the accuracy of the floorplan contained here, measurements of doors, windows, rooms and any other items are approximate and no responsibility is taken for any error, omission or mis-statement. This plan is for illustrative purposes only and should be used as such by any prospective purchaser. The services, systems and appliances shown have not been tested and no guarantee as to their operability or efficiency can be given.
Made with Metropix ©2024

Telephone: 01534 730 341

Email: sales@gaudin.je

22 Hill Street St Helier, Jersey JE2 4UA, Channel Islands