



## Park House, St Helier

St. Helier

# £749,000

Fabulous investment opportunity, opposite the vibrant area of Millennium Park. This property currently provides 2 commercial units on the ground floor, one of which being Gas Place Cafe and the other a Hairdressing salon and the upper floors provide residential one bedroom apartments. Whilst the residential units require refurbishment, the commercial units on the ground floor provide annual income of circa £36,800 and the residential units circa £20,000 per annum. Early viewing is recommended by the Sole Agents. For further information please contact Adam Lescop - [adaml@gaudin.je](mailto:adaml@gaudin.je) or 07797761026

Telephone: 01534 730 341

Email: [sales@gaudin.je](mailto:sales@gaudin.je)

22 Hill Street St Helier, Jersey JE2 4UA, Channel Islands



# Gallery



# Property Details

**Location:** Park House, St Helier

Fabulous investment opportunity, opposite the vibrant area of Millennium Park. This property currently provides 2 commercial units on the ground floor, one of which being Gas Place Cafe and the other a Hairdressing salon and the upper floors provide residential one bedroom apartments. Whilst the residential units require refurbishment, the commercial units on the ground floor provide annual income of circa £36,800 and the residential units circa £20,000 per annum. Early viewing is recommended by the Sole Agents. For further information please contact Adam Lescop - [adaml@gaudin.je](mailto:adaml@gaudin.je) or 07797761026

**Telephone: 01534 730 341**

**Email: [sales@gaudin.je](mailto:sales@gaudin.je)**

22 Hill Street St Helier, Jersey JE2 4UA, Channel Islands



# Key Features

For Sale

Investment opportunity

Comprising 2 x commercial units, 2 x 1 bedroom apartments

Apartments in need of refurbishment

Centre of town & opposite Millenium Park

Exciting investment return

Commercial income circa £36,800 per annum

Residential income circa £20,000 per annum

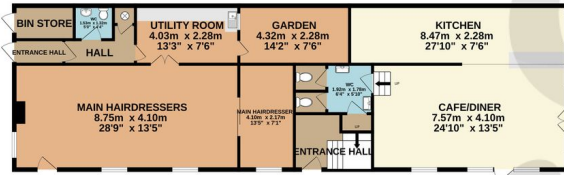
Telephone: 01534 730 341

Email: [sales@gaudin.je](mailto:sales@gaudin.je)

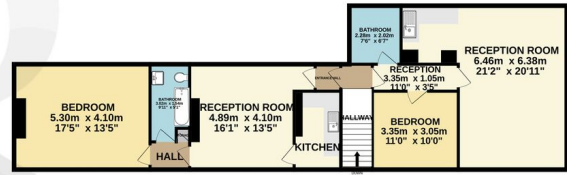
22 Hill Street St Helier, Jersey JE2 4UA, Channel Islands

# Floor Plans

GROUND FLOOR  
137.0 sq.m. (1475 sq.ft.) approx.



APARTMENTS X2  
105.3 sq.m. (1134 sq.ft.) approx.



TOTAL FLOOR AREA: 242.4 sq.m. (2609 sq.ft.) approx.

Whilst every attempt has been made to ensure the accuracy of the floorplan contained here, measurements of doors, windows, rooms and any other items are approximate and no responsibility is taken for any error, omission or mis-statement. This plan is for illustrative purposes only and should be used as such by any prospective purchaser. The services, systems and appliances shown have not been tested and no guarantee as to their operability or efficiency can be given.  
Made with Metropix ©2024

Telephone: 01534 730 341

Email: [sales@gaudin.je](mailto:sales@gaudin.je)

22 Hill Street St Helier, Jersey JE2 4UA, Channel Islands