



Callington Villa, St. Helier

St. Helier

£875,000

Introducing Callington Villa, a character Victorian family residence situated on La Route De St Aubin, in First Tower with easy access to town by car, bus and on foot. You are also close to the beachfront and its cycle path to town or out West. This spacious home offers a delightful blend of comfort, style and a very large sized garden, providing an ideal setting for family living. With four bedrooms the property is perfectly suited for accommodating a growing family. The property has a unique layout and ensures ample space for relaxation and privacy. Each bedroom is thoughtfully appointed, offering a tranquil retreat for every family member. The heart of this home lies in its large walled garden, providing an oasis of greenery and tranquility. Perfect for outdoor activities, gardening, or...

Telephone: 01534 730 341

Email: sales@gaudin.je

22 Hill Street St Helier, Jersey JE2 4UA, Channel Islands



Gallery



Property Details

Location: Callington Villa, St. Helier

Introducing Callington Villa, a character Victorian family residence situated on La Route De St Aubin, in First Tower with easy access to town by car, bus and on foot. You are also close to the beachfront and its cycle path to town or out West. This spacious home offers a delightful blend of comfort, style and a very large sized garden, providing an ideal setting for family living.

With four bedrooms the property is perfectly suited for accommodating a growing family. The property has a unique layout and ensures ample space for relaxation and privacy. Each bedroom is thoughtfully appointed, offering a tranquil retreat for every family member. The heart of this home lies in its large walled garden, providing an oasis of greenery and tranquility. Perfect for outdoor activities, gardening, or simply enjoying the fresh air, the garden offers endless possibilities for creating cherished memories. While parking is limited, the property provides one convenient parking space for the residents. There is a possibility of accommodating a second vehicle, ideally a small car or a motorbike, with the narrow carport directly in front of the assigned parking space. The property presents an exceptional opportunity to secure a well-appointed family home with a delightful garden in the sought after First Tower neighbourhood. Don't miss the chance to make this property your own and enjoy the perfect balance of comfort, style and outdoor space.

Telephone: 01534 730 341

Email: sales@gaudin.je

22 Hill Street St Helier, Jersey JE2 4UA, Channel Islands

Key Features

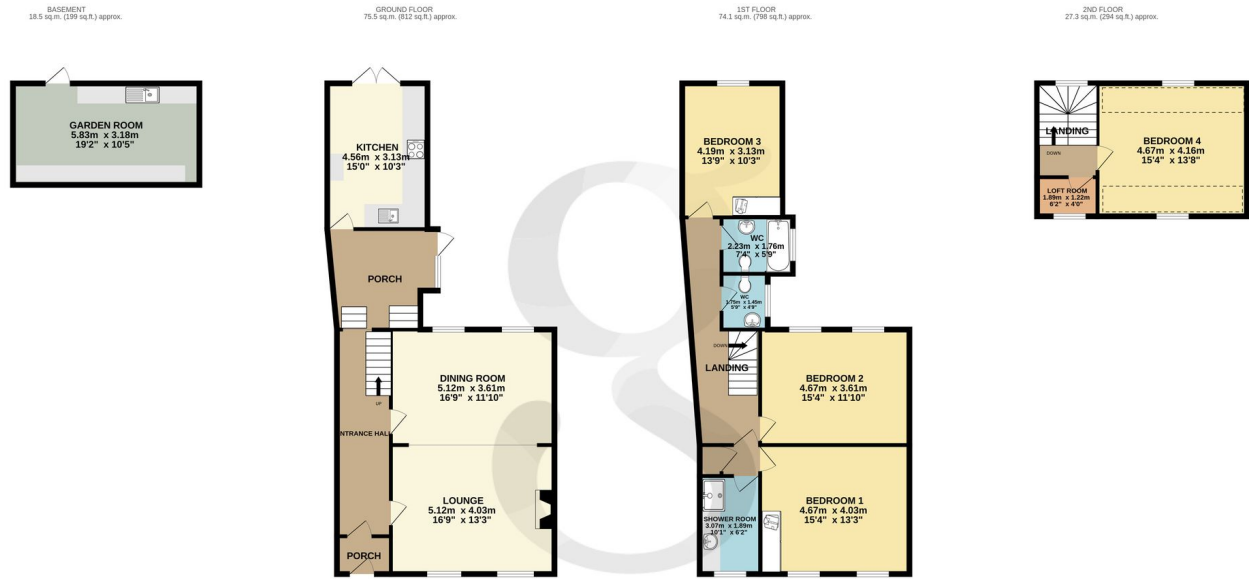
For Sale	Beds: 4	Baths: 2
Area: 2099 ft ²	4 bedrooms, 2 bathrooms	Kitchen/breakfast room
Semi basement large utility	Large enclosed walled garden	Close to St Aubin's Bay beach and cycle track
Regular bus route and walking distance to town	Plenty of character throughout	Parking for 1 car and bikes

Telephone: 01534 730 341

Email: sales@gaudin.je

22 Hill Street St Helier, Jersey JE2 4UA, Channel Islands

Floor Plans



TOTAL FLOOR AREA : 195.4 sq.m. (2103 sq.ft.) approx.

Whilst every attempt has been made to ensure the accuracy of the floorplan contained here, measurements of doors, windows, rooms and any other items are approximate and no responsibility is taken for any error, omission or mis-statement. This plan is for illustrative purposes only and should be used as such by any prospective purchaser. The services, systems and appliances shown have not been tested and no guarantee as to their operability or efficiency can be given.
Made with Metropix ©2024

Telephone: 01534 730 341

Email: sales@gaudin.je

22 Hill Street St Helier, Jersey JE2 4UA, Channel Islands