



5 Crahamel House, St Helier

St. Helier

£595,000

We are delighted to present this brand new development in the heart of St. Helier. One of only 6 in the block, situated on the top floor and fitted with a high spec throughout, offers open plan living space with access to the balcony, 2 bedrooms with one ensuite and a separate house bathroom. In addition, this apartment also comes with it's own individual garage offering parking for 1 car and a store lock up. This development is finished to a high standard with bright open communal areas and dedicated bin storage. It is an ideal apartment for either first time buyers, as a lock up and leave or an investment. Contact our sales team for more information.

Telephone: 01534 730 341

Email: sales@gaudin.je

22 Hill Street St Helier, Jersey JE2 4UA, Channel Islands



Gallery



Property Details

Location: 5 Crahamel House, St Helier

We are delighted to present this brand new development in the heart of St. Helier. One of only 6 in the block, situated on the top floor and fitted with a high spec throughout, offers open plan living space with access to the balcony, 2 bedrooms with one ensuite and a separate house bathroom. In addition, this apartment also comes with it's own individual garage offering parking for 1 car and a store lock up. This development is finished to a high standard with bright open communal areas and dedicated bin storage. It is an ideal apartment for either first time buyers, as a lock up and leave or an investment. Contact our sales team for more information.

Telephone: 01534 730 341

Email: sales@gaudin.je

22 Hill Street St Helier, Jersey JE2 4UA, Channel Islands



Key Features

For Sale	Beds: 2	Baths: 2
Type: Apartment	Area: 592 ft ²	2 bedrooms, 2 bathrooms
Top floor modern luxury apartment	Open plan living	Modern fully fitted kitchen
Primary bedroom with en suite	Balcony & access to sun terrace	Separate storage unit

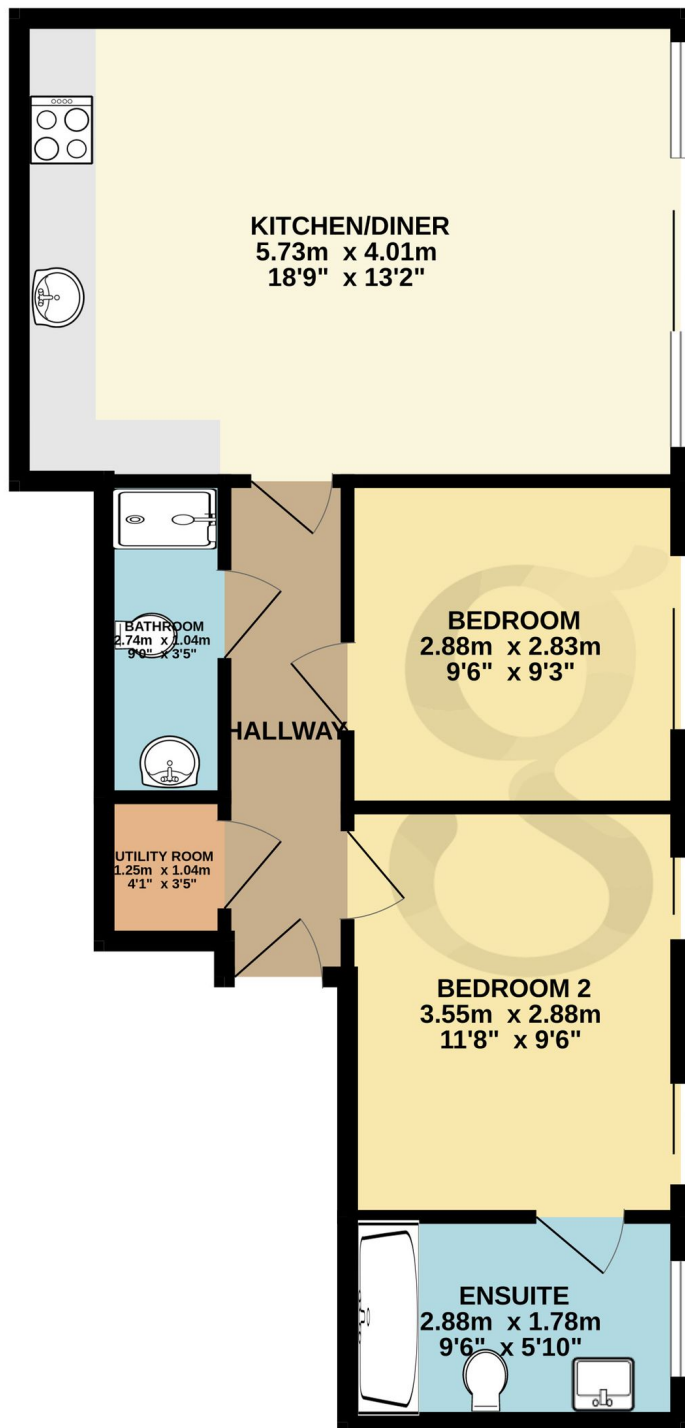
Telephone: 01534 730 341

Email: sales@gaudin.je

22 Hill Street St Helier, Jersey JE2 4UA, Channel Islands

Floor Plans

GROUND FLOOR
55.2 sq.m. (594 sq.ft.) approx.



TOTAL FLOOR AREA : 55.2 sq.m. (594 sq.ft.) approx.

Whilst every attempt has been made to ensure the accuracy of the floorplan contained here, measurements of doors, windows, rooms and any other items are approximate and no responsibility is taken for any error, omission or mis-statement. This plan is for illustrative purposes only and should be used as such by any prospective purchaser. The services, systems and appliances shown have not been tested and no guarantee as to their operability or efficiency can be given.

Made with Metropix ©2024

Telephone: 01534 730 341

Email: sales@gaudin.je

22 Hill Street St Helier, Jersey JE2 4UA, Channel Islands