



La Sabliere, St Clement

St. Clement

£2,295,000

La Sabliere is a stunning property presented in show home condition throughout, promising a move-in ready experience. Located just a short walk from the beach, it offers an ideal coastal lifestyle. The newly remodeled lounge and dining room feature a partially vaulted ceiling, creating a spacious and airy ambiance. Additional living spaces include a cosy snug, a versatile study and a utility room with a convenient pantry. The exterior is equally impressive with a large, meticulously manicured front garden that boasts a heated swimming pool, perfect for relaxation and entertaining. The private rear garden overlooks serene fields, providing a peaceful retreat. Beautiful hand-made cabinetry is a highlight throughout the home, adding a touch of craftsmanship and elegance. Practical features incl...

Telephone: 01534 730 341

Email: sales@gaudin.je

22 Hill Street St Helier, Jersey JE2 4UA, Channel Islands

 **GAUDIN CO**
The Property People since 1934

Gallery



Property Details

Location: La Sabliere, St Clement

La Sabliere is a stunning property presented in show home condition throughout, promising a move-in ready experience. Located just a short walk from the beach, it offers an ideal coastal lifestyle. The newly remodeled lounge and dining room feature a partially vaulted ceiling, creating a spacious and airy ambiance. Additional living spaces include a cosy snug, a versatile study and a utility room with a convenient pantry.

The exterior is equally impressive with a large, meticulously manicured front garden that boasts a heated swimming pool, perfect for relaxation and entertaining. The private rear garden overlooks serene fields, providing a peaceful retreat. Beautiful hand-made cabinetry is a highlight throughout the home, adding a touch of craftsmanship and elegance.

Practical features include a double garage and ample driveway parking, ensuring convenience for multiple vehicles. The property is also well-connected, situated on a great bus route with easy access both East and West. This home truly offers a blend of luxury, comfort, and convenience, making it a perfect choice for discerning buyers seeking a high-quality living experience close to the beach.

Telephone: 01534 730 341

Email: sales@gaudin.je

22 Hill Street St Helier, Jersey JE2 4UA, Channel Islands

Key Features

For Sale	Beds: 5	Baths: 4
Area: 3348 ft ²	Presented in show home condition throughout	Short walk to to the beach
Newly remodeled lounge/dining room with partially vaulted ceiling	Snug, study and utility with pantry	Large manicured garden to the front with heated swimming pool
Private rear garden overlooking fields	Beautiful hand-made cabinetry throughout	Double garage and driveway parking
On a great bus route going East and West		

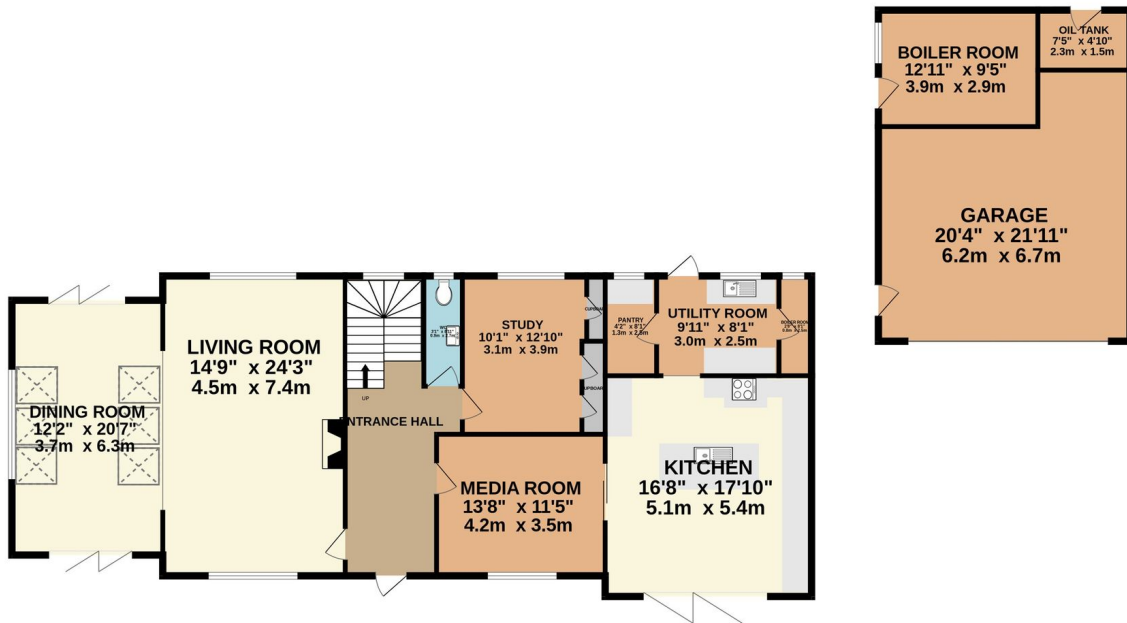
Telephone: 01534 730 341

Email: sales@gaudin.je

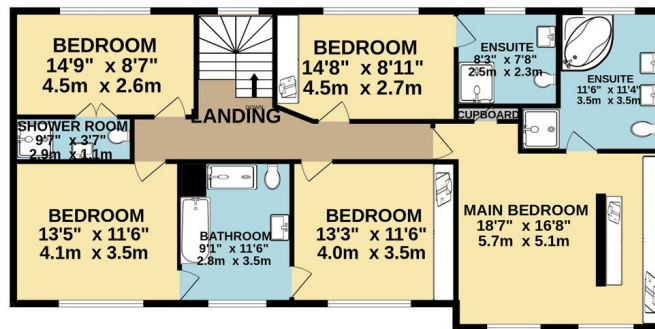
22 Hill Street St Helier, Jersey JE2 4UA, Channel Islands

Floor Plans

GROUND FLOOR
2090 sq.ft. (194.2 sq.m.) approx.



1ST FLOOR
1262 sq.ft. (117.2 sq.m.) approx.



TOTAL FLOOR AREA: 3352 sq.ft. (311.4 sq.m.) approx.

Whilst every attempt has been made to ensure the accuracy of the floorplan contained here, measurements of doors, windows, rooms and any other items are approximate and no responsibility is taken for any error, omission or mis-statement. This plan is for illustrative purposes only and should be used as such by any prospective purchaser. The services, systems and appliances shown have not been tested and no guarantee as to their operability or efficiency can be given.
Made with Metropix ©2024

Telephone: 01534 730 341

Email: sales@gaudin.je

22 Hill Street St Helier, Jersey JE2 4UA, Channel Islands