



Greve D'azette, St. Clement, JE2

£875,000

St. Clement

Maison Victor Hugo, constructed in the late 1980s, is a pioneering development of apartments along the Greve d'Azette coastline. This seafront penthouse apartment, now available for the first time since its construction, offers breathtaking sea views from all principal rooms. The generously proportioned residence consists of two spacious double bedrooms and two well-appointed bathrooms. The master bedroom is a true sanctuary, featuring an ensuite bathroom and panoramic sea views, creating a serene and luxurious atmosphere. The exceptionally large living room is a highlight of the property, with sliding doors that open onto a balcony, providing a seamless connection between indoor and outdoor spaces. The living area is complemented by an eat-in kitchen, making it a perfect space for both rela...

Telephone: 01534 730 341

Email: sales@gaudin.je

22 Hill Street St Helier, Jersey JE2 4UA, Channel Islands



Gallery



Telephone: 01534 730 341
Email: sales@gaudin.je
22 Hill Street St Helier, Jersey JE2 4UA, Channel Islands



Property Details

Location: Greve D'azette, St. Clement, JE2

Maison Victor Hugo, constructed in the late 1980s, is a pioneering development of apartments along the Greve d'Azette coastline. This seafront penthouse apartment, now available for the first time since its construction, offers breathtaking sea views from all principal rooms.

The generously proportioned residence consists of two spacious double bedrooms and two well-appointed bathrooms. The master bedroom is a true sanctuary, featuring an ensuite bathroom and panoramic sea views, creating a serene and luxurious atmosphere.

The exceptionally large living room is a highlight of the property, with sliding doors that open onto a balcony, providing a seamless connection between indoor and outdoor spaces. The living area is complemented by an eat-in kitchen, making it a perfect space for both relaxation and entertaining.

Residents of this penthouse will enjoy the convenience of secure underground side-by-side parking for two cars plus ample visitor parking, making it convenient for guests. Additionally, the property offers a lock-up storage room, providing extra space for belongings.

For added convenience, there is lift access from the car park, ensuring easy and comfortable entry to the penthouse. This feature enhances accessibility and makes the residence suitable for individuals with varying mobility needs.

Maison Victor Hugo stands as a symbol of luxurious coastal living, and this seafront penthouse represents a rare opportunity to own a piece of this prestigious development with unparalleled views and a range of amenities for a sophisticated and comfortable lifestyle.

Telephone: 01534 730 341

Email: sales@gaudin.je

22 Hill Street St Helier, Jersey JE2 4UA, Channel Islands

Key Features

For Sale	Beds: 2	Baths: 2
Type: Apartment	Area: 1389 ft ²	2 double bedrooms, 2 bathrooms
Sea front penthouse apartment	Spacious top floor with balcony & stunning beach views	Lovely size fitted kitchen/diner
Very large lounge	Spacious & bright accommodation	Under cover parking for 2 cars
Lift access up from the carpark	Lock up store room	

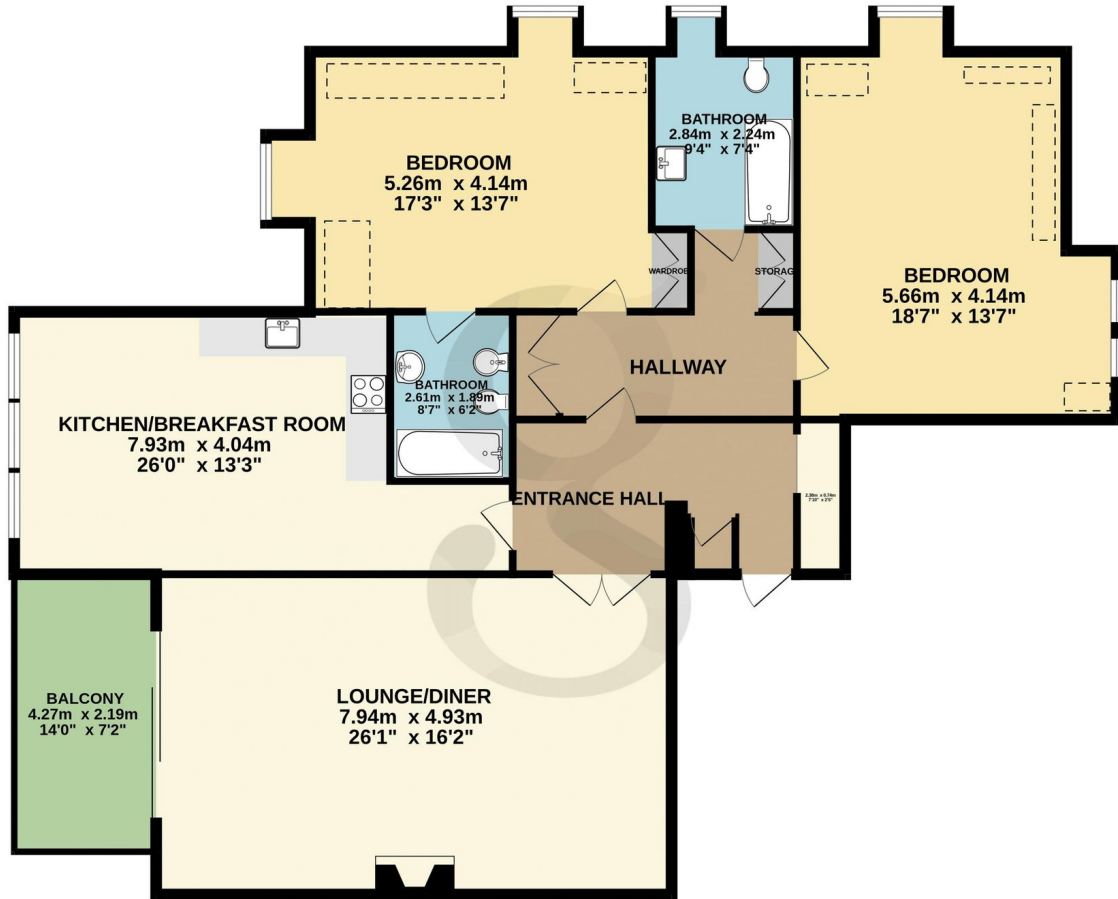
Telephone: 01534 730 341

Email: sales@gaudin.je

22 Hill Street St Helier, Jersey JE2 4UA, Channel Islands

Floor Plans

TOP FLOOR
129.0 sq.m. (1389 sq.ft.) approx.



TOTAL FLOOR AREA: 129.0 sq.m. (1389 sq.ft.) approx.

Whilst every attempt has been made to ensure the accuracy of the floorplan contained here, measurements of doors, windows, rooms and any other items are approximate and no responsibility is taken for any error, omission or mis-statement. This plan is for illustrative purposes only and should be used as such by any prospective purchaser. The services, systems and appliances shown have not been tested and no guarantee as to their operability or efficiency can be given.

Made with Metropix ©2024

Telephone: 01534 730 341

Email: sales@gaudin.je

22 Hill Street St Helier, Jersey JE2 4UA, Channel Islands