



7 Cedar Court, Grouville

Grouville

£1,275,000

Welcome to The Penthouse at Cedar Court, an exquisite residence situated within the highly prestigious Woodlands Development in Grouville. Immaculately presented throughout, this stunning penthouse boasts three en-suite double bedrooms, offering unparalleled comfort and privacy. The spacious interior is complemented by breathtaking views of Gorey Castle and extends as far as the French coast, creating a serene and picturesque backdrop for your everyday living. The property features a garage and tandem parking for two vehicles, ensuring convenience and ample space for your parking needs. Enjoy the beautifully maintained communal gardens, a tranquil oasis perfect for relaxation and leisurely strolls. Located just a short drive from local farm shops and supermarkets, this penthouse provides the...

Telephone: 01534 730 341

Email: sales@gaudin.je

22 Hill Street St Helier, Jersey JE2 4UA, Channel Islands

 **GAUDIN CO**
The Property People since 1934

Gallery



Telephone: 01534 730 341
Email: sales@gaudin.je
22 Hill Street St Helier, Jersey JE2 4UA, Channel Islands



Property Details

Location: 7 Cedar Court, Grouville

Welcome to The Penthouse at Cedar Court, an exquisite residence situated within the highly prestigious Woodlands Development in Grouville. Immaculately presented throughout, this stunning penthouse boasts three en-suite double bedrooms, offering unparalleled comfort and privacy.

The spacious interior is complemented by breathtaking views of Gorey Castle and extends as far as the French coast, creating a serene and picturesque backdrop for your everyday living. The property features a garage and tandem parking for two vehicles, ensuring convenience and ample space for your parking needs.

Enjoy the beautifully maintained communal gardens, a tranquil oasis perfect for relaxation and leisurely strolls. Located just a short drive from local farm shops and supermarkets, this penthouse provides the perfect balance of seclusion and accessibility.

Ideal for members of The Royal Jersey Golf Club, the property offers easy access to the club as well as to Gorey Village and Harbour, known for its charming atmosphere and vibrant community. With lift access, every aspect of this penthouse is designed for ease and elegance, making it a truly exceptional place to call home.

Telephone: 01534 730 341

Email: sales@gaudin.je

22 Hill Street St Helier, Jersey JE2 4UA, Channel Islands

Key Features

For Sale	Beds: 3	Baths: 3
Type: Apartment	Area: 2142 ft ²	Three en-suite double bedrooms
Views of Gorey Castle and as far as the French coast	Private terraces to the front and rear	Garage and parking for two in tandem
Lift access	Beautifully maintained communal gardens	Short drive to a number of local farm shops & supermarkets
Ideal for location for members of The Royal Jersey Golf Club	Easy access to Gorey Village & Harbour	Ample visitor spaces & on-site caretaker

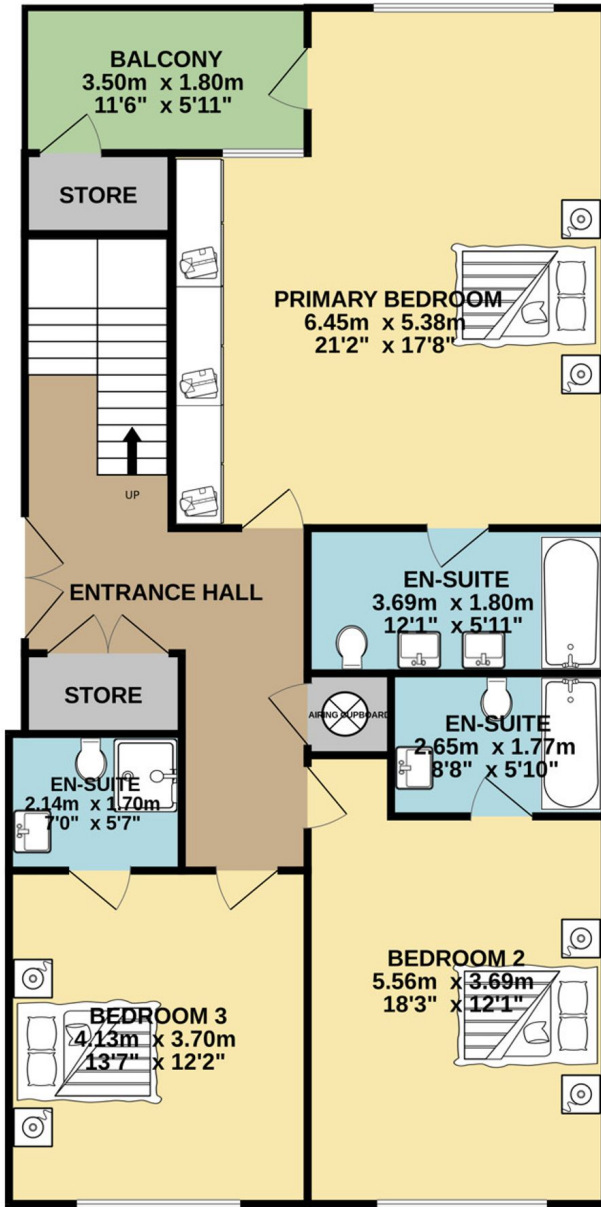
Telephone: 01534 730 341

Email: sales@gaudin.je

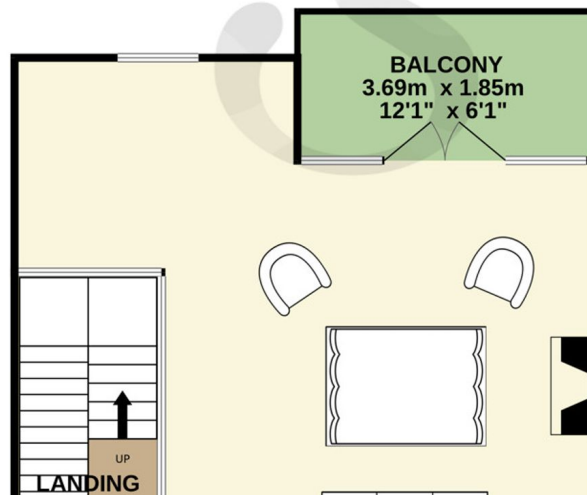
22 Hill Street St Helier, Jersey JE2 4UA, Channel Islands

Floor Plans

FOURTH FLOOR
101.5 sq.m. (1093 sq.ft.) approx.



FIFTH FLOOR
98.0 sq.m. (1055 sq.ft.) approx.



Telephone: 01534 730 341
Email: sales@gaudin.je

22 Hill Street St Helier, Jersey JE2 4UA, Channel Islands

