



## Flat 7, 17 Bond Street, St Helier

# £1,750 pcm

St. Helier

We are delighted to present this brand new development in the heart of St. Helier. Fitted with the latest high quality appliances, fitted wardrobes and luxury vinyl flooring, this apartment has been finished to a very high standard. This second floor apartment offers an open plan living space, two double bedrooms with built in wardrobes, one with en suite and plenty of storage space. Early viewings come highly recommended. Not suitable for pets. No parking. LICENSED OR ENTITLED.

Telephone: 01534 730 341

Email: [sales@gaudin.je](mailto:sales@gaudin.je)

22 Hill Street St Helier, Jersey JE2 4UA, Channel Islands



# Gallery



# Property Details

**Location:** Flat 7, 17 Bond Street, St Helier

We are delighted to present this brand new development in the heart of St. Helier.

Fitted with the latest high quality appliances, fitted wardrobes and luxury vinyl flooring, this apartment has been finished to a very high standard.

This second floor apartment offers an open plan living space, two double bedrooms with built in wardrobes, one with en suite and plenty of storage space. Early viewings come highly recommended. Not suitable for pets. No parking. LICENSED OR ENTITLED.

**Telephone: 01534 730 341**

**Email: [sales@gaudin.je](mailto:sales@gaudin.je)**

22 Hill Street St Helier, Jersey JE2 4UA, Channel Islands



# Key Features

For Rent	Beds: 2	Baths: 2
Type: Apartment	2 bedroom 2 bathroom	Central St Helier
Built 2 years ago	Luxury Fixtures and Fittins	No parking, close to public paying carpark
Not suitable for pets	LICENSED OR ENTITLED HOUSING STATUS	

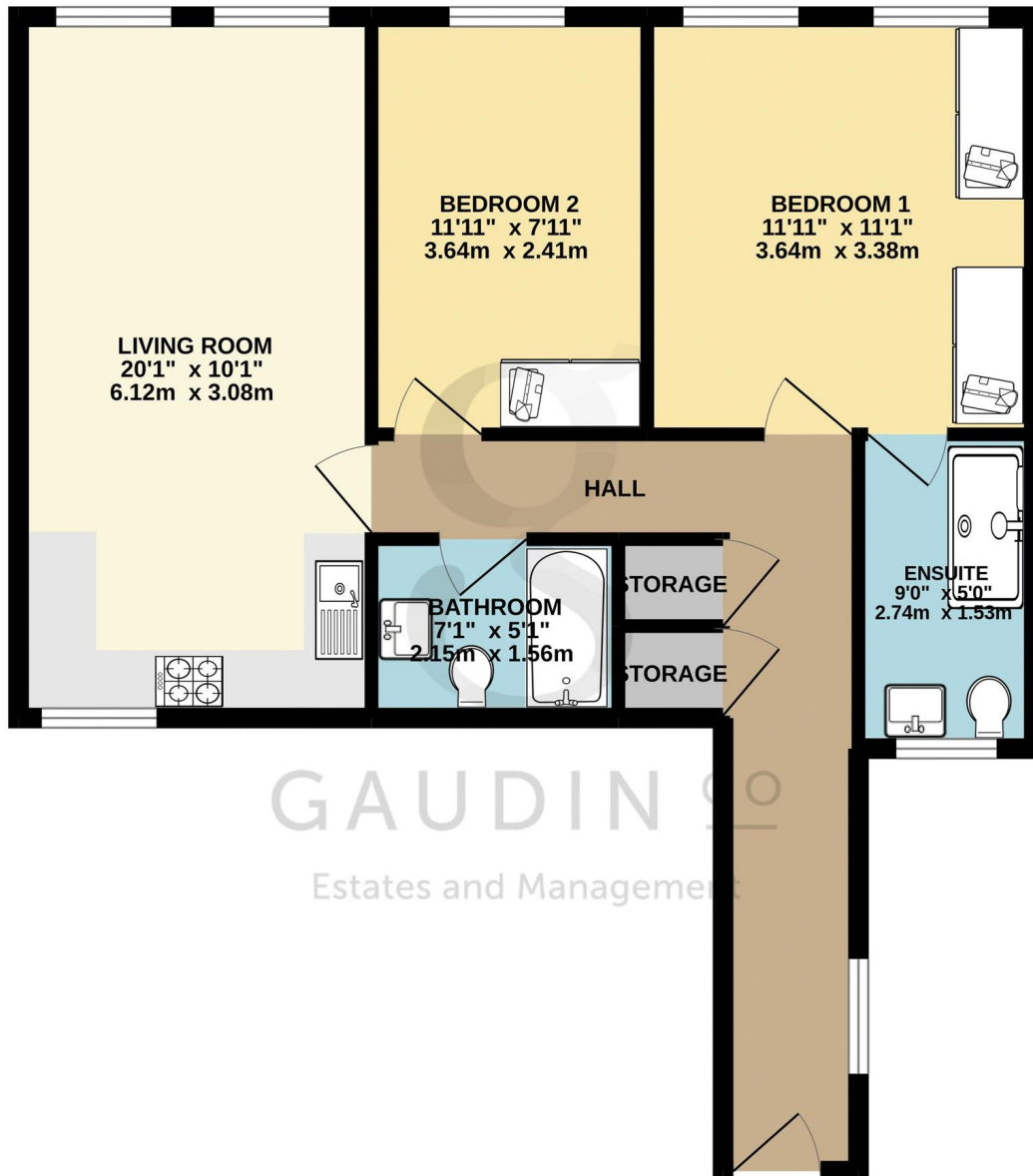
Telephone: 01534 730 341

Email: [sales@gaudin.je](mailto:sales@gaudin.je)

22 Hill Street St Helier, Jersey JE2 4UA, Channel Islands

# Floor Plans

GROUND FLOOR  
638 sq.ft. (59.3 sq.m.) approx.



TOTAL FLOOR AREA : 638 sq.ft. (59.3 sq.m.) approx.

Whilst every attempt has been made to ensure the accuracy of the floorplan contained here, measurements of doors, windows, rooms and any other items are approximate and no responsibility is taken for any error, omission or mis-statement. This plan is for illustrative purposes only and should be used as such by any prospective purchaser. The services, systems and appliances shown have not been tested and no guarantee as to their operability or efficiency can be given.  
Made with Metropix ©2022

Telephone: 01534 730 341

Email: [sales@gaudin.je](mailto:sales@gaudin.je)

22 Hill Street St Helier, Jersey JE2 4UA, Channel Islands