



## Orchard View, St Mary

St. Mary

**£3,000 pcm**

Situated within the much sought after parish of St Mary is this stunning home which was constructed in 2020. This lovely granite home which is immaculately presented and is set in a countryside location in brief offers welcoming entrance hall, cloakroom, kitchen / diner with double doors on to the South facing garden, good size lounge with double doors onto the rear garden, three double bedrooms and two bathrooms. 3 Parking spaces. Garage. Externally there are good size gardens to the front and rear and parking for three cars. Available immediately. LICENSED OR ENTITLED HOUSING STATUS

Telephone: 01534 730 341

Email: [sales@gaudin.je](mailto:sales@gaudin.je)

22 Hill Street St Helier, Jersey JE2 4UA, Channel Islands



# Gallery



# Property Details

**Location:** Orchard View, St Mary

Situated within the much sought after parish of St Mary is this stunning home which was constructed in 2020. This lovely granite home which is immaculately presented and is set in a countryside location in brief offers welcoming entrance hall, cloakroom, kitchen / diner with double doors on to the South facing garden, good size lounge with double doors onto the rear garden, three double bedrooms and two bathrooms. 3 Parking spaces. Garage. Externally there are good size gardens to the front and rear and parking for three cars. Available immediately. LICENSED OR ENTITLED HOUSING STATUS

**Telephone:** 01534 730 341

**Email:** [sales@gaudin.je](mailto:sales@gaudin.je)

22 Hill Street St Helier, Jersey JE2 4UA, Channel Islands

# Key Features

For Rent	Beds: 3	Baths: 2
Superb granite property	3 bedrooms, 2 bathrooms	Sunny rear garden
Garage and 3 parking spaces	Modern fixtures & fittings	Available end of August 2024
LICENSED OR ENTITLED HOUSING STATUS		

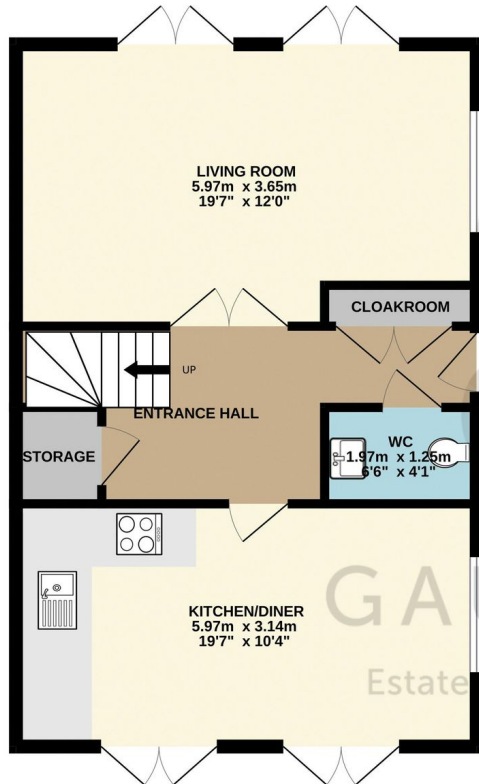
Telephone: 01534 730 341

Email: [sales@gaudin.je](mailto:sales@gaudin.je)

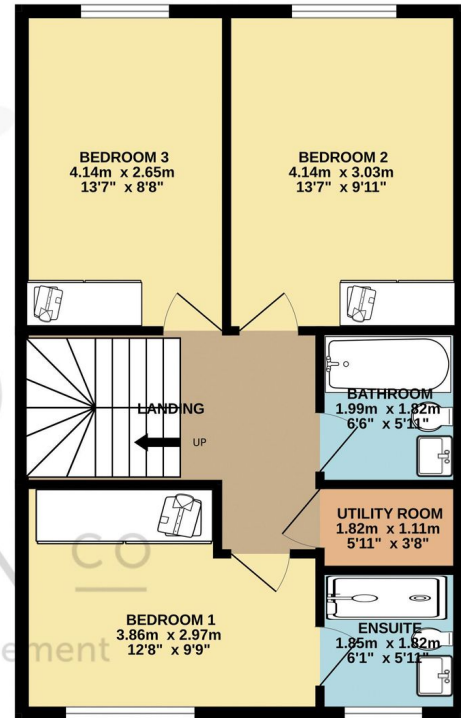
22 Hill Street St Helier, Jersey JE2 4UA, Channel Islands

# Floor Plans

GROUND FLOOR



1ST FLOOR



Whilst every attempt has been made to ensure the accuracy of the floorplan contained here, measurements of doors, windows, rooms and any other items are approximate and no responsibility is taken for any error, omission or mis-statement. This plan is for illustrative purposes only and should be used as such by any prospective purchaser. The services, systems and appliances shown have not been tested and no guarantee as to their operability or efficiency can be given.  
Made with Metropix ©2023

Telephone: 01534 730 341

Email: sales@gaudin.je

22 Hill Street St Helier, Jersey JE2 4UA, Channel Islands