



# 7 Graham Court, St Helier

St. Helier

# £349,000

Welcome to Graham Court, a lovely, purpose built apartment situated just round the corner from the town centre. In brief, this apartment offers a spacious lounge/diner, a separate kitchen, one double bedroom, a bathroom, communal terraced garden area and an external storage cupboard. With the luxury of one undercover parking space making it easy to access the further areas of the island, this apartment offers convenience and a cosy lifestyle. Call us today on 670333 to book in a viewing.

Telephone: 01534 730 341

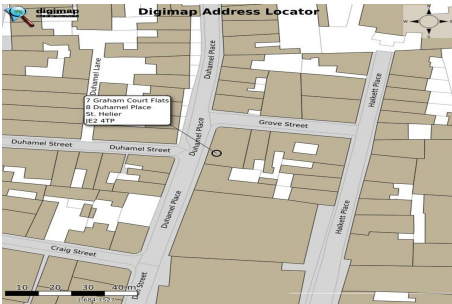
Email: [sales@gaudin.je](mailto:sales@gaudin.je)

22 Hill Street St Helier, Jersey JE2 4UA, Channel Islands

 **GAUDIN CO**  
*The Property People since 1934*



# Gallery



Telephone: 01534 730 341  
Email: sales@gaudin.je  
22 Hill Street St Helier, Jersey JE2 4UA, Channel Islands



# Property Details

**Location:** 7 Graham Court, St Helier

Welcome to Graham Court, a lovely, purpose built apartment situated just round the corner from the town centre. In brief, this apartment offers a spacious lounge/diner, a separate kitchen, one double bedroom, a bathroom, communal terraced garden area and an external storage cupboard. With the luxury of one undercover parking space making it easy to access the further areas of the island, this apartment offers convenience and a cosy lifestyle.

Call us today on 670333 to book in a viewing.

**Telephone:** 01534 730 341

**Email:** [sales@gaudin.je](mailto:sales@gaudin.je)

22 Hill Street St Helier, Jersey JE2 4UA, Channel Islands

# Key Features

For Sale	Beds: 1	Baths: 1
Type: Apartment	Area: 431 ft <sup>2</sup>	1 bedroom, 1 bathroom
Purpose built apartment	Separate kitchen	Conveniently located in town
Good first time buy	Undercover parking for one	External storage cupboard
Communal outside area		

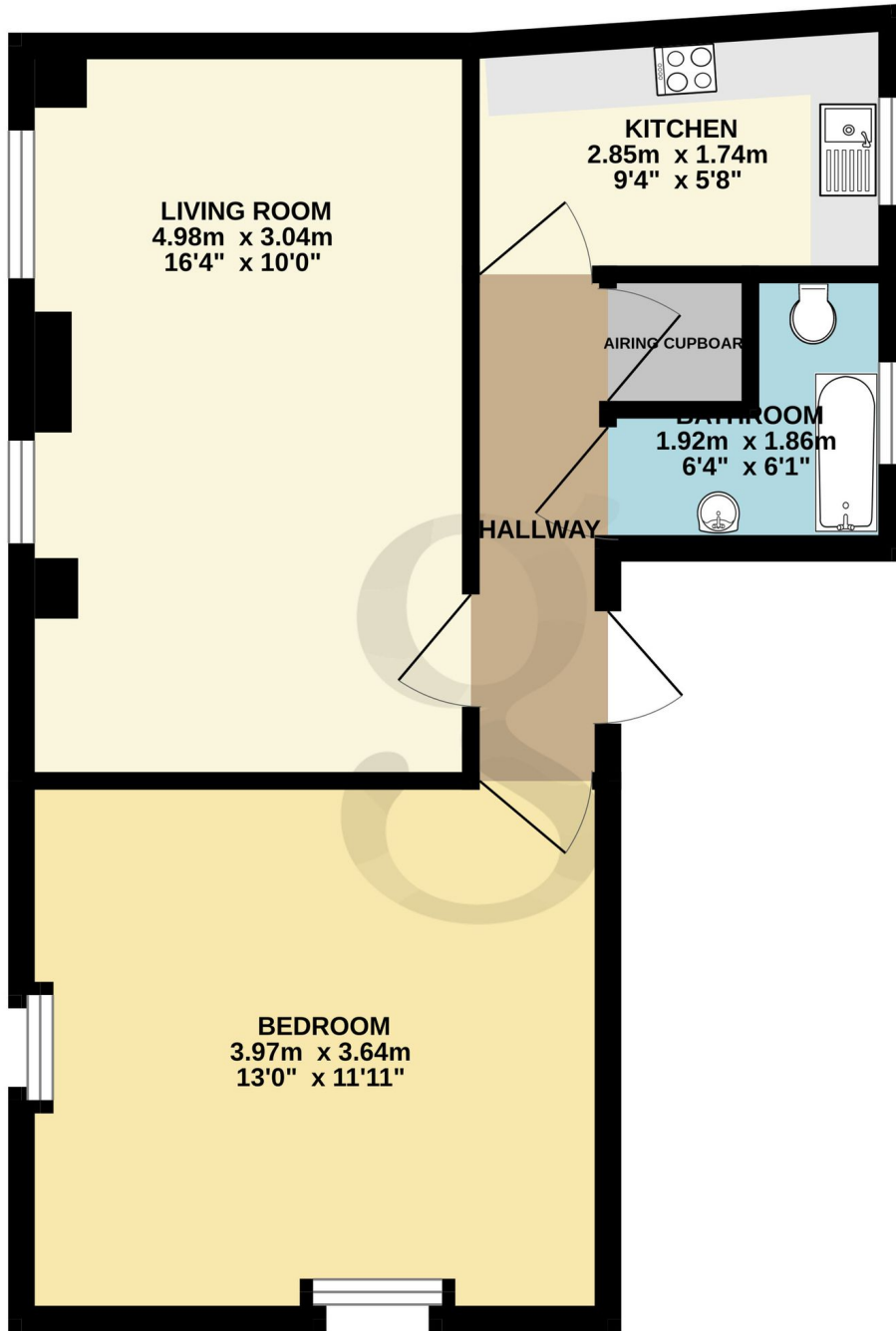
Telephone: 01534 730 341

Email: [sales@gaudin.je](mailto:sales@gaudin.je)

22 Hill Street St Helier, Jersey JE2 4UA, Channel Islands

# Floor Plans

GROUND FLOOR  
40.3 sq.m. (434 sq.ft.) approx.



TOTAL FLOOR AREA : 40.3 sq.m. (434 sq.ft.) approx.

Whilst every attempt has been made to ensure the accuracy of the floorplan contained here, measurements of doors, windows, rooms and any other items are approximate and no responsibility is taken for any error, omission or mis-statement. This plan is for illustrative purposes only and should be used as such by any prospective purchaser. The services, systems and appliances shown have not been tested and no guarantee as to their operability or efficiency can be given.  
Made with Metropix ©2024

Telephone: 01534 730 341  
Email: sales@gaudin.je

22 Hill Street St Helier, Jersey JE2 4UA, Channel Islands