



Moorings, Glendale Avenue, St Clement

St. Clement

£825,000

Welcome to this charming 3-bedroom bungalow that is in immaculate condition and ready to move right in. The modern open-plan kitchen flowing into the lounge/diner makes entertaining a breeze. With 3 bedrooms and 2 bathrooms, there's plenty of space for everyone in the family. One of the highlights of this property is the large attic with great head height, offering endless possibilities for extra living space or storage. Outside, the nice-sized garden at the rear provides a peaceful retreat for relaxation. Parking is great with space for 4 cars, perfect for guests or a growing family. Situated on the number 1 bus route, commuting is a breeze. Don't miss your chance to make this lovely bungalow your new home! To book a view or for more information please call 01534 670333 or email [sales@gaudin...](mailto:sales@gaudin.co)

Telephone: 01534 730 341

Email: sales@gaudin.co

22 Hill Street St Helier, Jersey JE2 4UA, Channel Islands

 **GAUDIN CO**
The Property People since 1934

Gallery



Property Details

Location: Moorings, Glendale Avenue, St Clement

Welcome to this charming 3-bedroom bungalow that is in immaculate condition and ready to move right in. The modern open-plan kitchen flowing into the lounge/diner makes entertaining a breeze. With 3 bedrooms and 2 bathrooms, there's plenty of space for everyone in the family.

One of the highlights of this property is the large attic with great head height, offering endless possibilities for extra living space or storage. Outside, the nice-sized garden at the rear provides a peaceful retreat for relaxation.

Parking is great with space for 4 cars, perfect for guests or a growing family. Situated on the number 1 bus route, commuting is a breeze. Don't miss your chance to make this lovely bungalow your new home ! To book a view or for more information please call 01534 670333 or email sales@gaudin.je

Telephone: 01534 730 341

Email: sales@gaudin.je

22 Hill Street St Helier, Jersey JE2 4UA, Channel Islands



Key Features

For Sale	Beds: 3	Baths: 2
Type: Bungalow	Area: 1044 ft ²	Bungalow in immaculate condition
3 bedrooms, 2 bathrooms	Lovely open plan kitchen through lounge / diner	Large attic with great head height
Across the road from the beach	Nlce size garden to the rear	Parking for 4 cars
Situated on the number 1 bus route		

Telephone: 01534 730 341

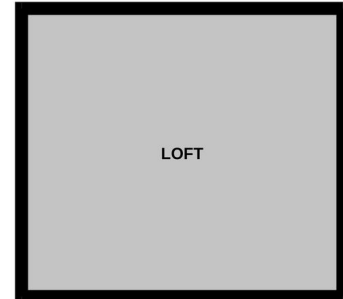
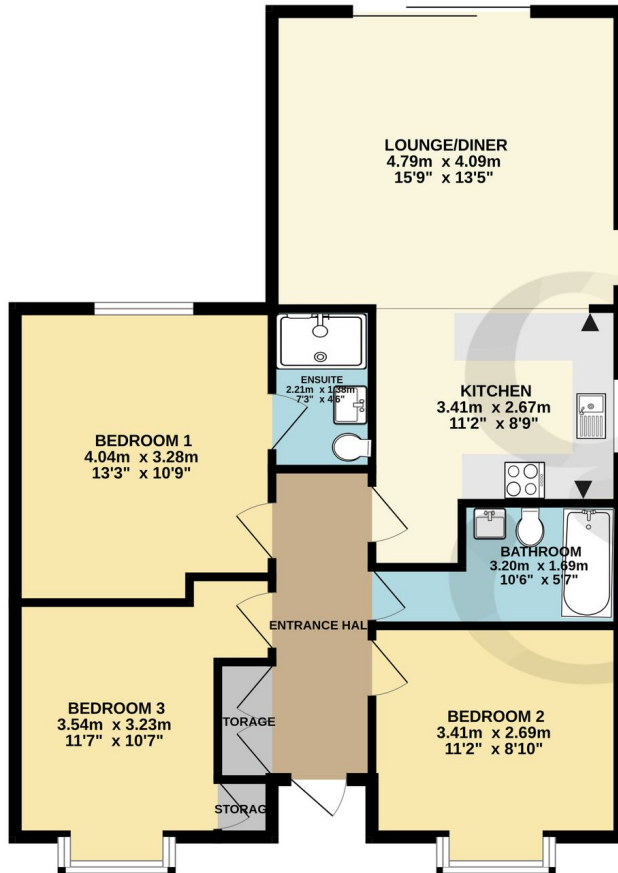
Email: sales@gaudin.je

22 Hill Street St Helier, Jersey JE2 4UA, Channel Islands

Floor Plans

80.2 sq.m. (864 sq.ft.) approx.

1ST FLOOR
17.6 sq.m. (189 sq.ft.) approx.



TOTAL FLOOR AREA : 97.8 sq.m. (1053 sq.ft.) approx.

Whilst every attempt has been made to ensure the accuracy of the floorplan contained here, measurements of doors, windows, rooms and any other items are approximate and no responsibility is taken for any error, omission or mis-statement. This plan is for illustrative purposes only and should be used as such by any prospective purchaser. The services, systems and appliances shown have not been tested and no guarantee as to their operability or efficiency can be given.
Made with Metropix ©2024

Telephone: 01534 730 341

Email: sales@gaudin.je

22 Hill Street St Helier, Jersey JE2 4UA, Channel Islands