



## 24 Maison Belleville, St Saviour

St. Saviour

**£95,950**

Over 60s ground floor leasehold apartment situated just a short walk to local amenities. The accommodation which needs updating in brief comprises of 1 double bedroom, lounge/diner, bathroom, kitchen, and storage cupboard. The communal facilities include stunning gardens, large residents lounge with kitchenette and wc, laundry facilities and the option of guest accommodation for family etc. when visiting the Island. There is onsite rentable parking (subject to availability)

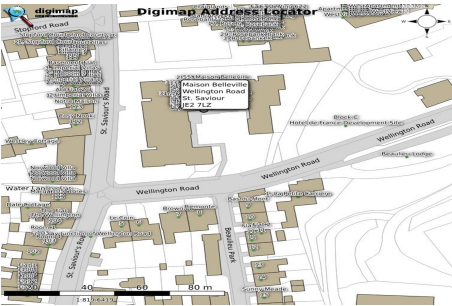
Telephone: 01534 730 341

Email: [sales@gaudin.je](mailto:sales@gaudin.je)

22 Hill Street St Helier, Jersey JE2 4UA, Channel Islands

 **GAUDIN CO**  
*The Property People since 1934*

# Gallery



Telephone: 01534 730 341  
Email: [sales@gaudin.je](mailto:sales@gaudin.je)  
22 Hill Street St Helier, Jersey JE2 4UA, Channel Islands



# Property Details

**Location:** 24 Maison Belleville, St Saviour

Over 60s ground floor leasehold apartment situated just a short walk to local amenities. The accommodation which needs updating in brief comprises of 1 double bedroom, lounge/diner, bathroom, kitchen, and storage cupboard. The communal facilities include stunning gardens, large residents lounge with kitchenette and wc, laundry facilities and the option of guest accommodation for family etc. when visiting the Island. There is onsite rentable parking (subject to availability)

**Telephone:** 01534 730 341

**Email:** [sales@gaudin.je](mailto:sales@gaudin.je)

22 Hill Street St Helier, Jersey JE2 4UA, Channel Islands

# Key Features

|  |  |                              |
|--|--|------------------------------|
| For Sale                                     | Beds: 1                                  | Baths: 1                     |
| Area: 431 ft <sup>2</sup>                    | Over 60's 1 bedroom apartment            | Separate kitchen             |
| Walk in shower                               | In need of updating                      | Range of communal facilities |
| Leasehold properties with 63 years remaining | Rentable parking subject to availability |                              |

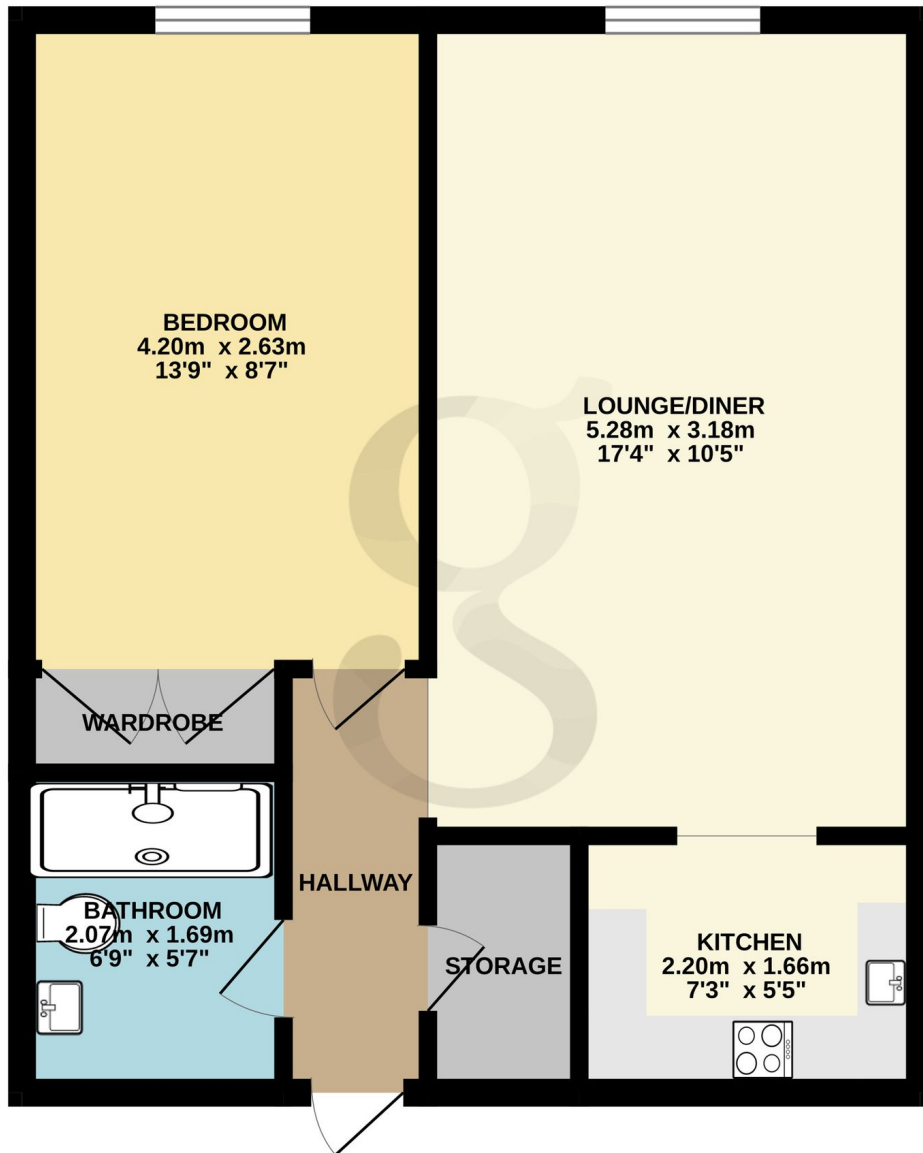
Telephone: 01534 730 341

Email: [sales@gaudin.je](mailto:sales@gaudin.je)

22 Hill Street St Helier, Jersey JE2 4UA, Channel Islands

# Floor Plans

GROUND FLOOR  
40.3 sq.m. (434 sq.ft.) approx.



TOTAL FLOOR AREA : 40.3 sq.m. (434 sq.ft.) approx.

Whilst every attempt has been made to ensure the accuracy of the floorplan contained here, measurements of doors, windows, rooms and any other items are approximate and no responsibility is taken for any error, omission or mis-statement. This plan is for illustrative purposes only and should be used as such by any prospective purchaser. The services, systems and appliances shown have not been tested and no guarantee as to their operability or efficiency can be given.

Made with Metropix ©2024

Telephone: 01534 730 341

Email: [sales@gaudin.je](mailto:sales@gaudin.je)

22 Hill Street St Helier, Jersey JE2 4UA, Channel Islands