



Gloucester Street, St. Helier, JE2

£350,000

St. Helier

Introducing a newly decorated 2 bedroom apartment within the Spectrum development providing a fresh and modern ambience throughout. Step inside to discover an open plan living area that effortlessly flows from the living room to the dining area and kitchen. The perfect space for entertaining guests or enjoying quiet evenings at home. This apartment boasts two generously sized double bedrooms, offering ample space for rest and relaxation. Located in a highly convenient location, this property offers an opportunity to live in comfort. Don't miss out on the chance to make this cosy property your own and experience the urban living.

Telephone: 01534 730 341

Email: sales@gaudin.je

22 Hill Street St Helier, Jersey JE2 4UA, Channel Islands



Gallery



Property Details

Location: Gloucester Street, St. Helier, JE2

Introducing a newly decorated 2 bedroom apartment within the Spectrum development providing a fresh and modern ambience throughout.

Step inside to discover an open plan living area that effortlessly flows from the living room to the dining area and kitchen. The perfect space for entertaining guests or enjoying quiet evenings at home.

This apartment boasts two generously sized double bedrooms, offering ample space for rest and relaxation.

Located in a highly convenient location, this property offers an opportunity to live in comfort.

Don't miss out on the chance to make this cosy property your own and experience the urban living.

Telephone: 01534 730 341

Email: sales@gaudin.je

22 Hill Street St Helier, Jersey JE2 4UA, Channel Islands

Key Features

For Sale	Beds: 2	Baths: 1
Type: Apartment	Area: 710 ft ²	2 Bedroom, 1 Bathroom
Recently been re-decorated	Convenient location!	Open plan living area
Both bedrooms are doubles	Fitted wardrobes with mirrored doors in both bedrooms	Situated in the Spectrum development
Great living space	Large storage cupboard in basement	

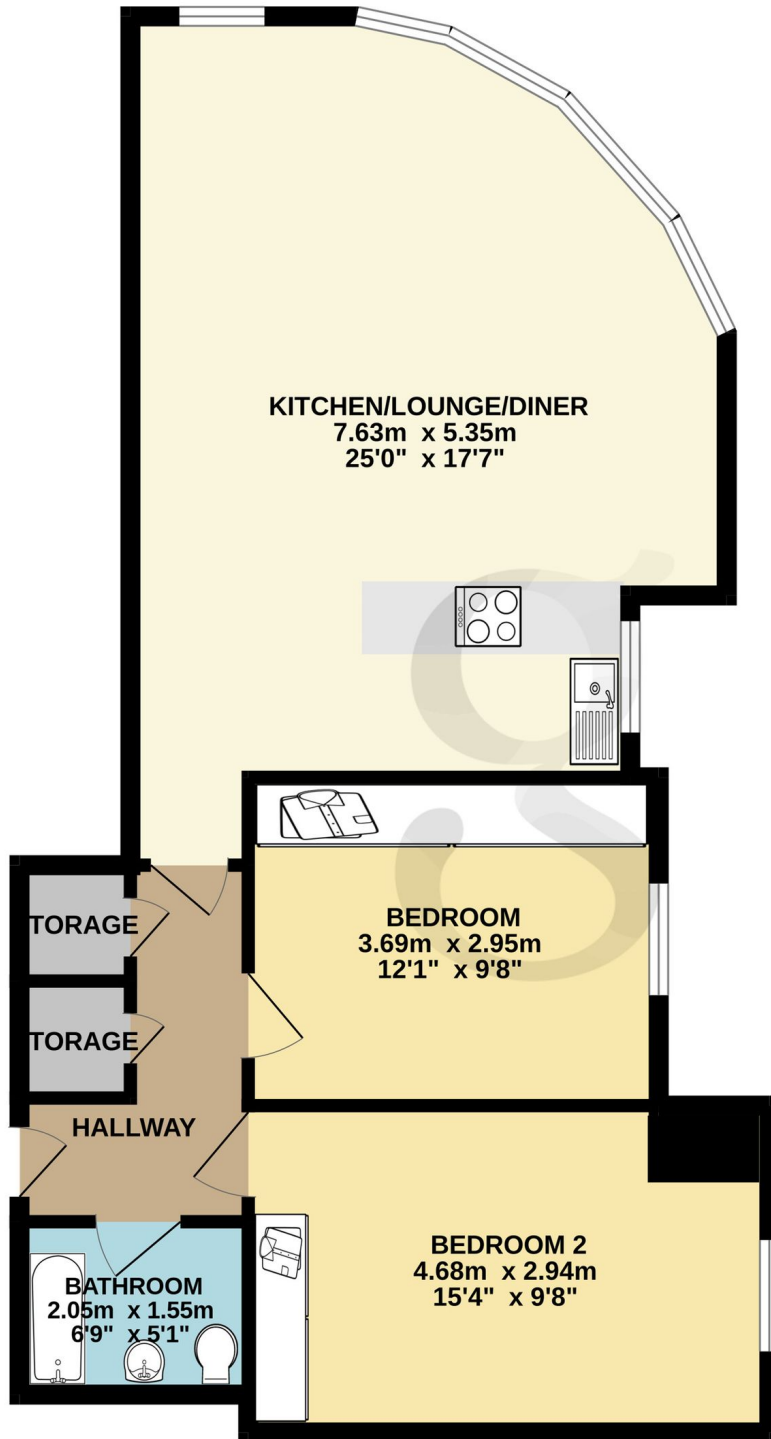
Telephone: 01534 730 341

Email: sales@gaudin.je

22 Hill Street St Helier, Jersey JE2 4UA, Channel Islands

Floor Plans

GROUND FLOOR
66.9 sq.m. (720 sq.ft.) approx.



TOTAL FLOOR AREA : 66.9 sq.m. (720 sq.ft.) approx.

Whilst every attempt has been made to ensure the accuracy of the floorplan contained here, measurements of doors, windows, rooms and any other items are approximate and no responsibility is taken for any error, omission or mis-statement. This plan is for illustrative purposes only and should be used as such by any prospective purchaser. The services, systems and appliances shown have not been tested and no guarantee as to their operability or efficiency can be given.

Made with Metropix ©2024

Telephone: 01534 730 341

Email: sales@gaudin.je

22 Hill Street St Helier, Jersey JE2 4UA, Channel Islands