



## 21 West Park Avenue, St Helier

# £725,000

### St. Helier

Step into this gorgeous Victorian townhouse and prepare to be wowed by the charm and character it exudes. This 4-bedroom terraced house which needs a little bit of TLC boasts a delightful lounge featuring a cosy wood-burning stove, perfect for those chilly evenings where you just want to curl up and relax. The high ceilings, original floorboards, picture rails, and fireplaces throughout the house add a touch of elegance and sophistication that is hard to resist. With 4 bedrooms and 3 bathrooms, this lovely property offers plenty of space for a growing family or those who simply love to have room to spread out. The separate dining room, complete with original pocket doors leading to the lounge, provides a wonderful space for entertaining guests or enjoying family meals., whilst the separate...

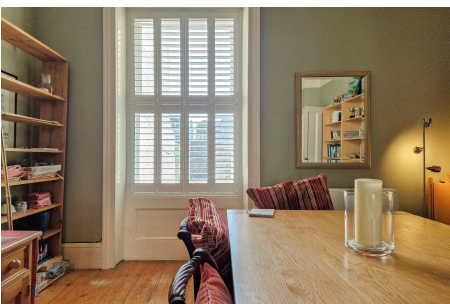
Telephone: 01534 730 341

Email: [sales@gaudin.je](mailto:sales@gaudin.je)

22 Hill Street St Helier, Jersey JE2 4UA, Channel Islands



# Gallery



# Property Details

**Location:** 21 West Park Avenue, St Helier

Step into this gorgeous Victorian townhouse and prepare to be wowed by the charm and character it exudes. This 4-bedroom terraced house which needs a little bit of TLC boasts a delightful lounge featuring a cosy wood-burning stove, perfect for those chilly evenings where you just want to curl up and relax. The high ceilings, original floorboards, picture rails, and fireplaces throughout the house add a touch of elegance and sophistication that is hard to resist.

With 4 bedrooms and 3 bathrooms, this lovely property offers plenty of space for a growing family or those who simply love to have room to spread out. The separate dining room, complete with original pocket doors leading to the lounge, provides a wonderful space for entertaining guests or enjoying family meals., whilst the separate kitchen, equipped with a range-style cooker, is perfect for whipping up those delicious meals!

For those needing additional room or looking for a bit of privacy, the studio apartment on the top floor is ideal for guests, teenagers, or a cosy home office. The snug at the rear of the house offers a versatile space that can be used as an office, playroom, or a peaceful retreat to unwind after a long day.

While parking may not be available on-site, residents can take advantage of the residents' parking scheme, subject to availability and waiting list.

Approximately 1790 sq ft in size, this great family home provides ample space without feeling overwhelming. Whether you're dreaming of lazy Sunday mornings spent sipping coffee in the cosy lounge or hosting dinner parties in the lovely dining room, this property offers a little something for everyone.

Don't miss out on the opportunity to make this charming Victorian townhouse your own. Book a viewing today and discover the endless possibilities that this beautiful property has to offer. Call 01534 670333 or email [sales@gaudin.je](mailto:sales@gaudin.je)

**Telephone: 01534 730 341**

**Email: [sales@gaudin.je](mailto:sales@gaudin.je)**

22 Hill Street St Helier, Jersey JE2 4UA, Channel Islands

# Key Features

For Sale	Beds: 4	Baths: 3
Area: 1787 ft <sup>2</sup>	Gorgeous Victorian Town House	4 bedrooms and 3 bathrooms
Lovely original features, high ceilings, floorboards, picture rails, fireplaces etc	Spacious lounge with wood burning stove	Separate dining room with pocket doors to the lounge
Studio apartment on the top floor	Snug / office /playroom to the rear with own entrance	Great size home approx 1790 sq ft
Separate kitchen with range style cooker	No parking however falls within the residents parking scheme (subject to availability and waiting list)	

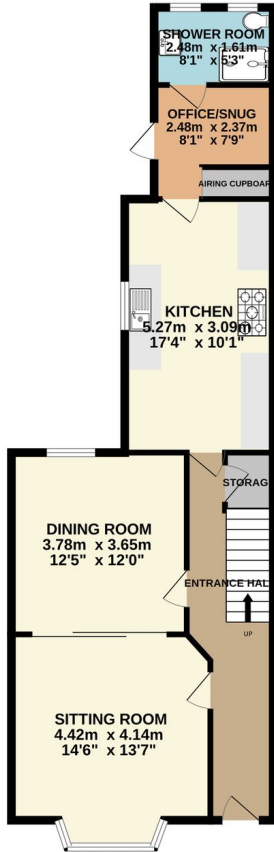
Telephone: 01534 730 341

Email: [sales@gaudin.je](mailto:sales@gaudin.je)

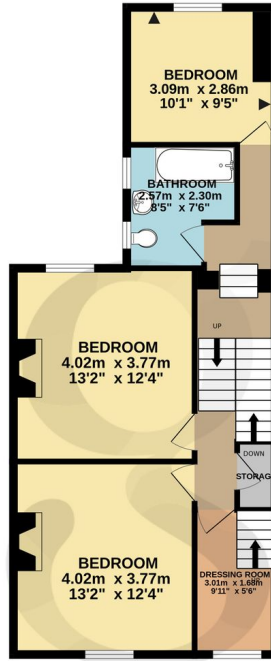
22 Hill Street St Helier, Jersey JE2 4UA, Channel Islands

# Floor Plans

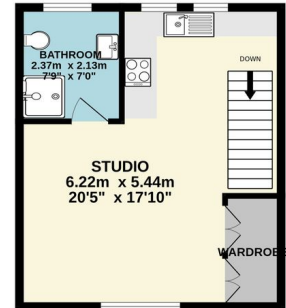
GROUND FLOOR  
68.9 sq.m. (741 sq.ft.) approx.



1ST FLOOR  
58.4 sq.m. (629 sq.ft.) approx.



2ND FLOOR  
33.9 sq.m. (365 sq.ft.) approx.



TOTAL FLOOR AREA: 161.2 sq.m. (1735 sq.ft.) approx.

Whilst every attempt has been made to ensure the accuracy of the floorplan contained here, measurements of doors, windows, rooms and any other items are approximate and no responsibility is taken for any error, omission or mis-statement. This plan is for illustrative purposes only and should be used as such by any prospective purchaser. The services, systems and appliances shown have not been tested and no guarantee as to their operability or efficiency can be given.  
Made with Metropix ©2024

Telephone: 01534 730 341

Email: [sales@gaudin.je](mailto:sales@gaudin.je)

22 Hill Street St Helier, Jersey JE2 4UA, Channel Islands